

# HEADMASTER'S RETREAT SPRING 2017

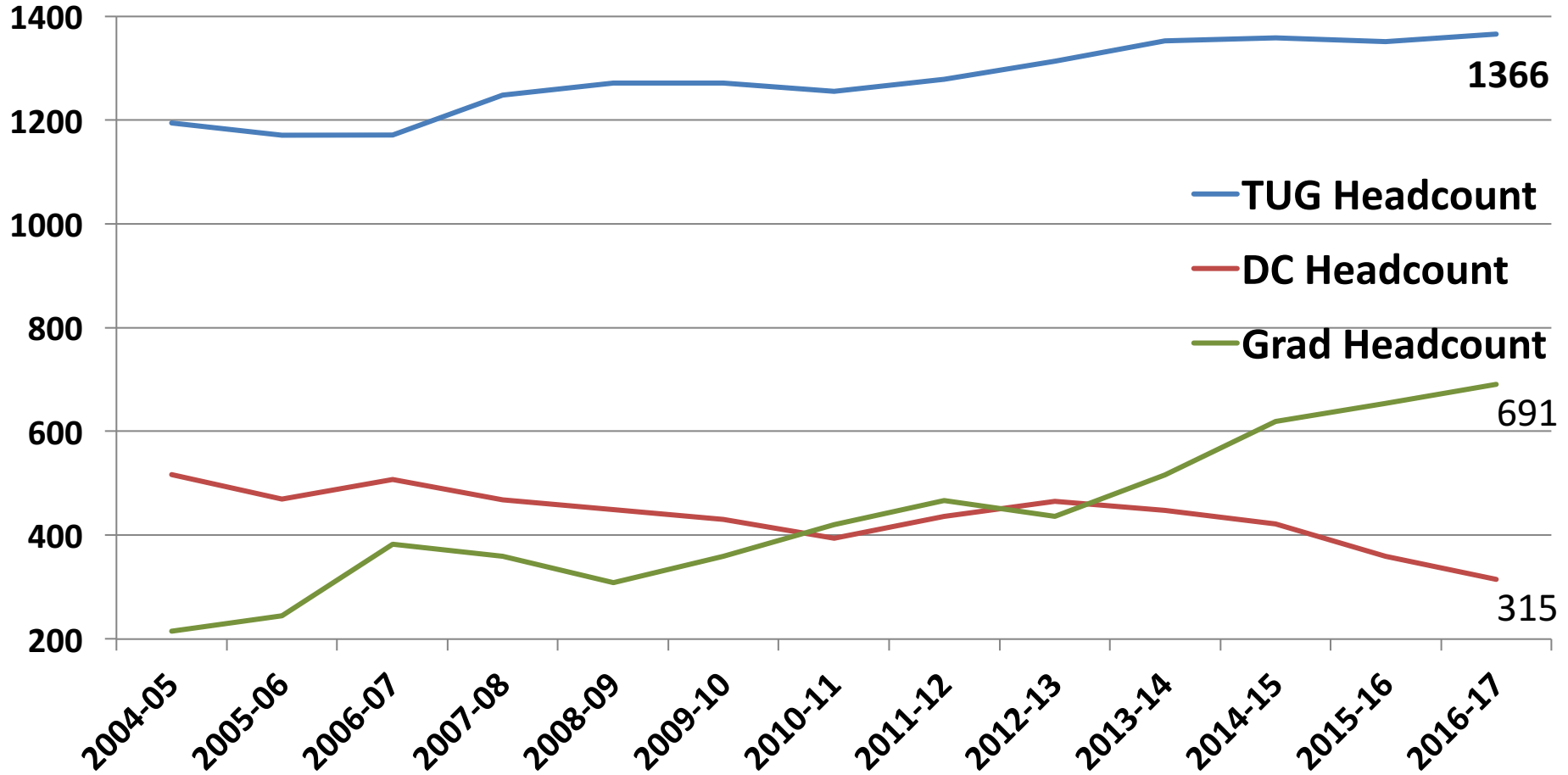
---



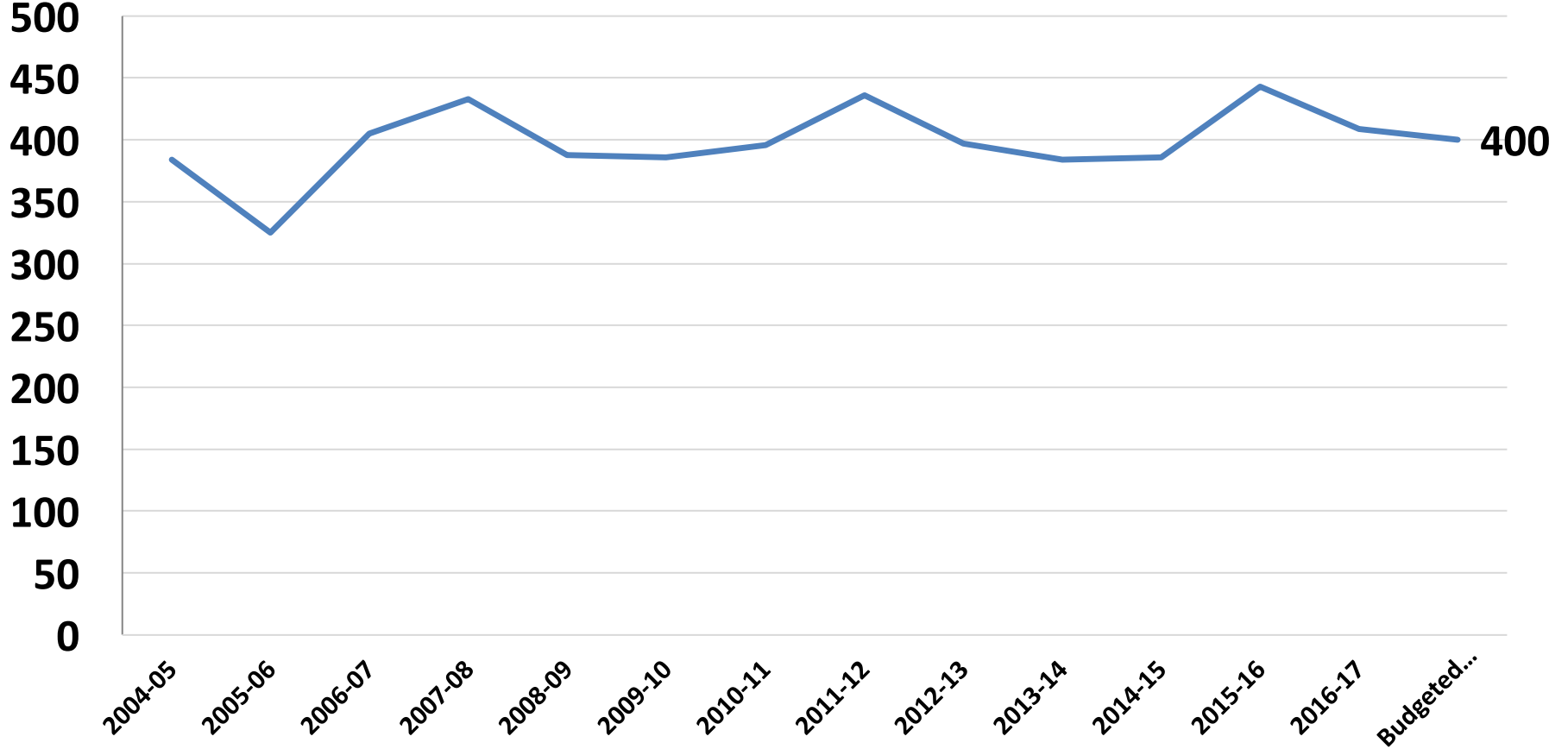
# Headwinds for Christian Education

- Enrollment
- Giving
- Cultural
- Digital Revolution

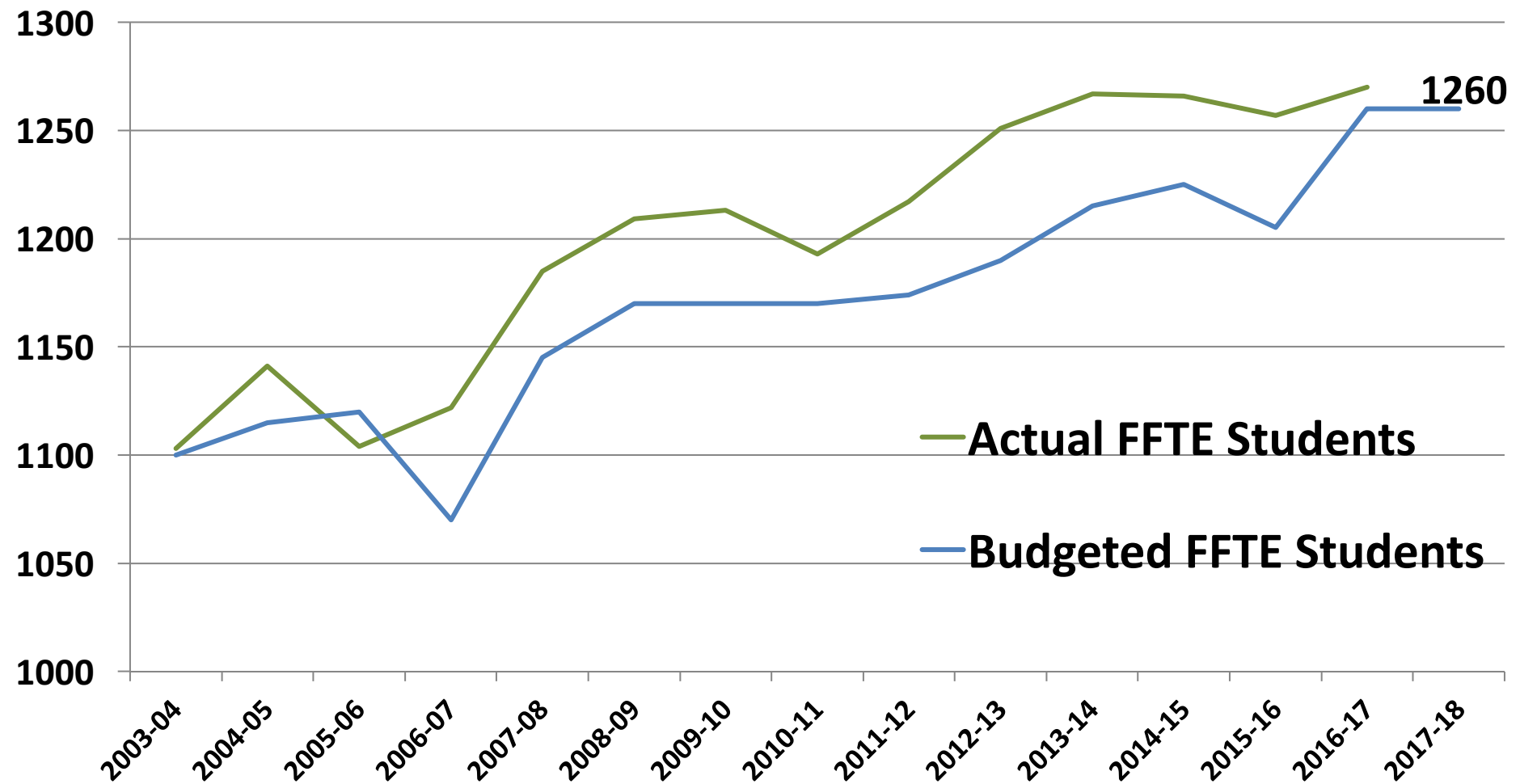
# Historical Fall Headcount



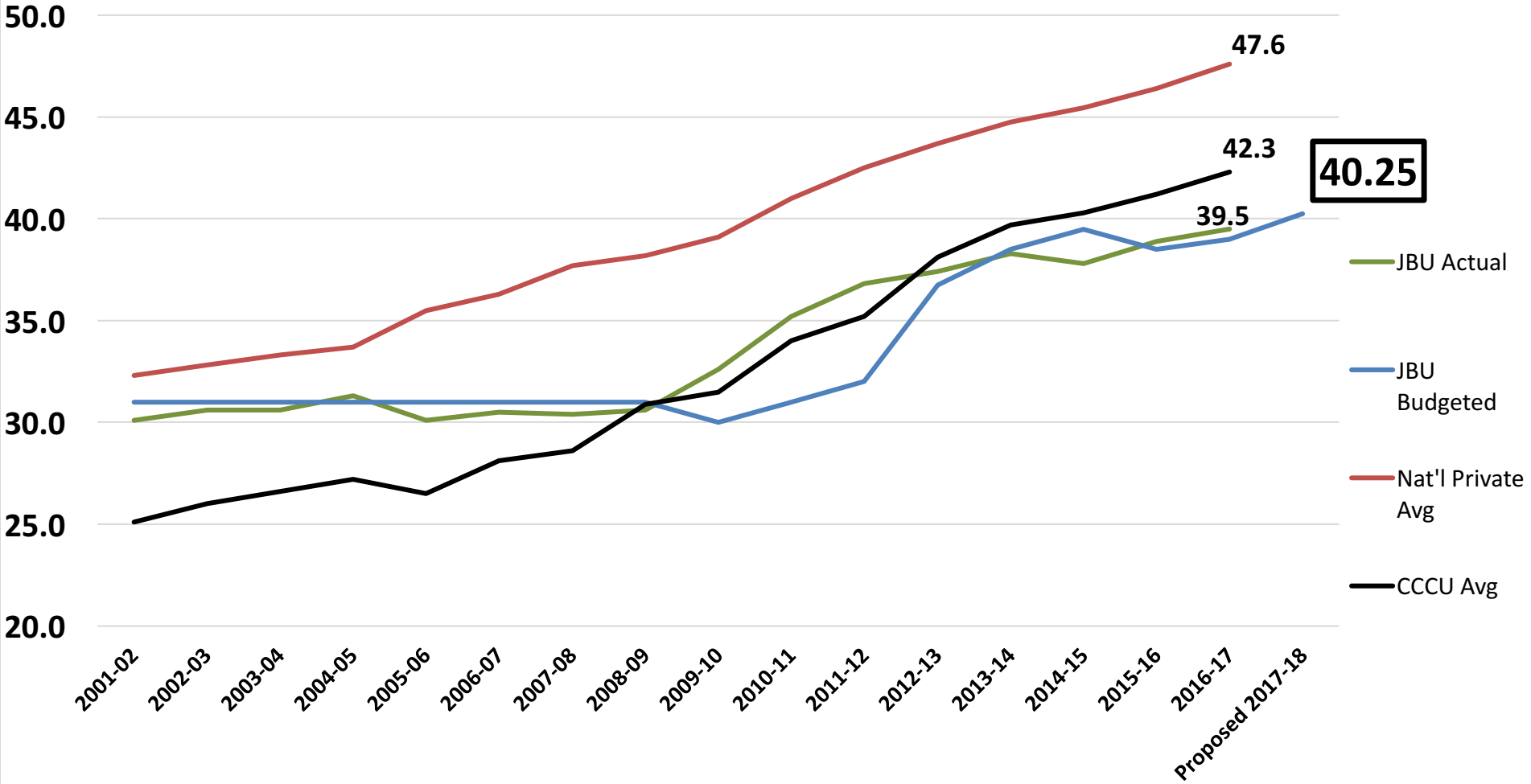
# New Fall Full-time TUG Students



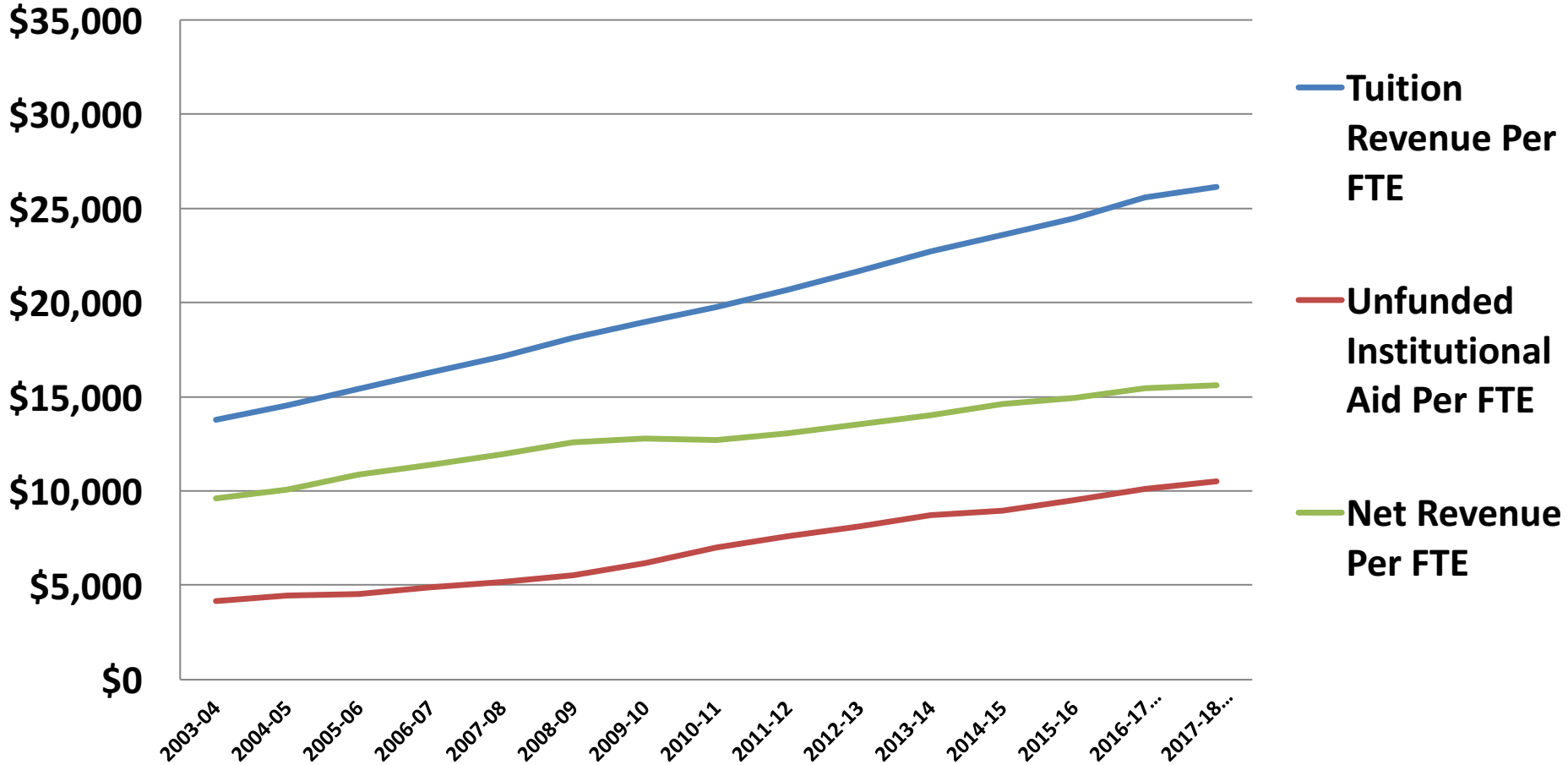
# Enrollment Surpluses



# TUG Unfunded Discount %



# Net Revenue Per Student



# JBU Headwinds

- Enrollment
- **Giving**
- Cultural



## JBU GIFTS BY YEAR (in millions)

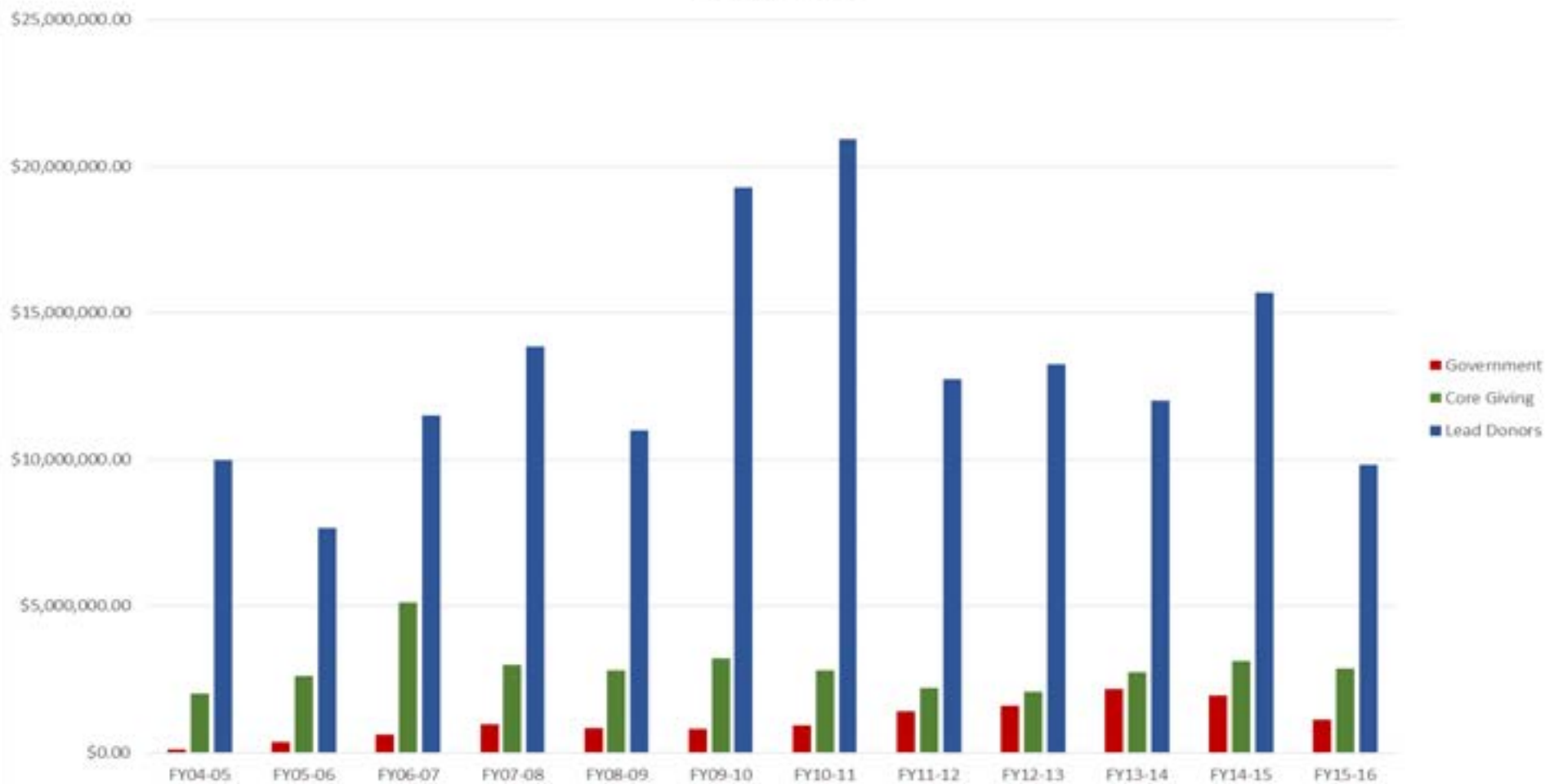


**KEEPING FAITH**  
\$110 MILLION CAMPAIGN

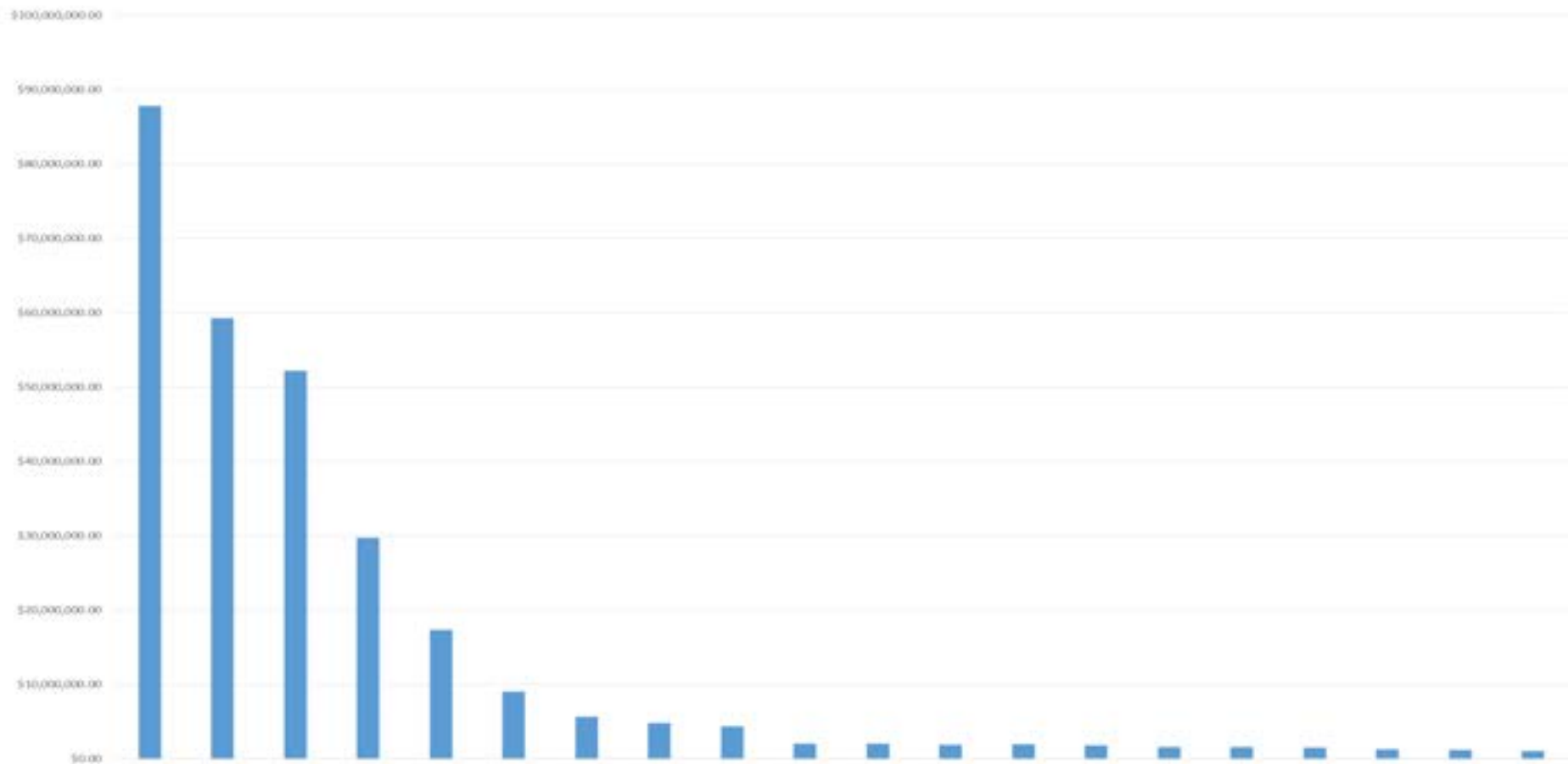
 JOHN BROWN UNIVERSITY

  
CAMPAIGN  
FOR THE  
**NEXT CENTURY**  
A HOPE AND A FUTURE

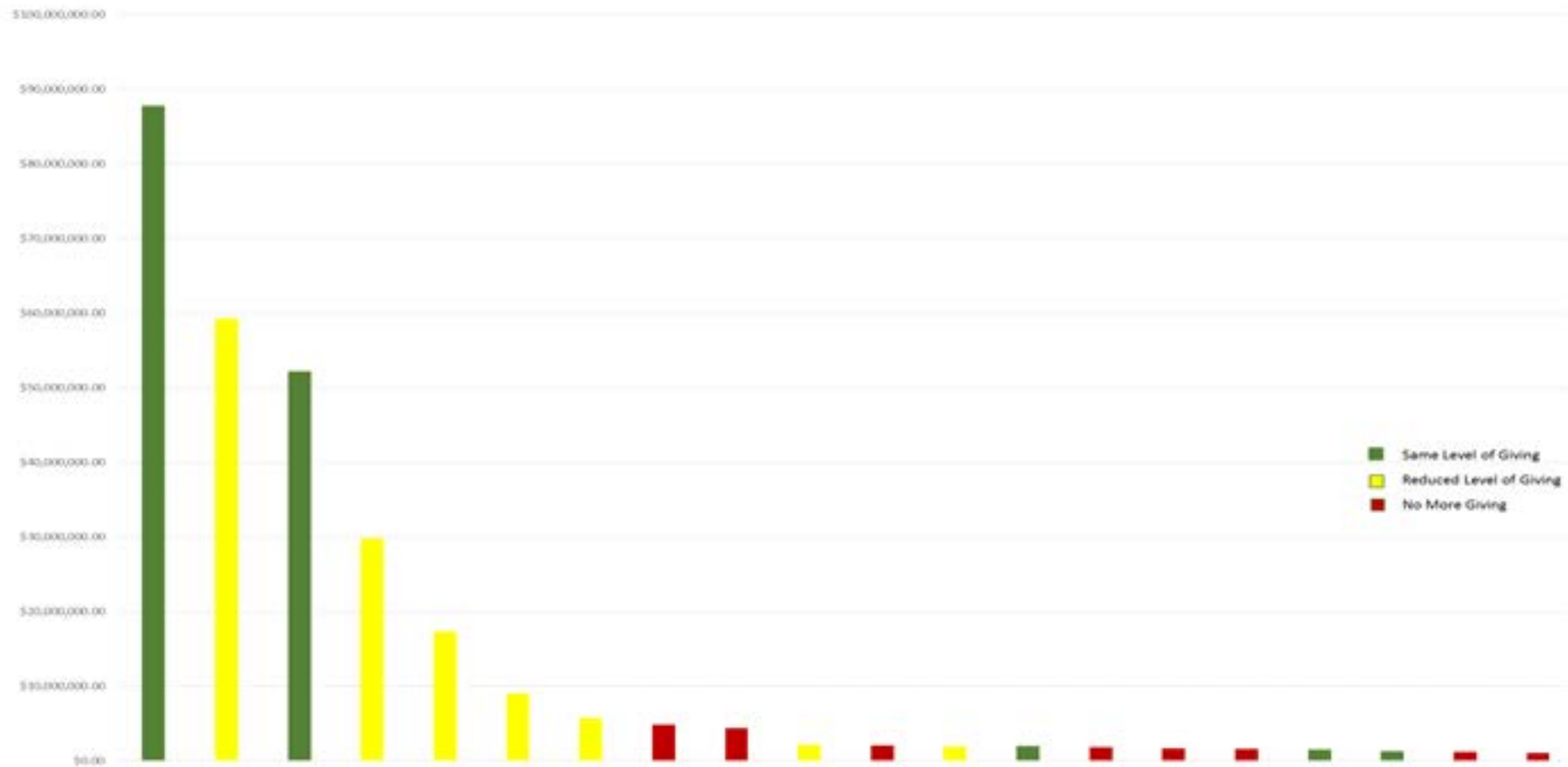
## Leadership Donors By Fiscal Year



Leadership Donors Lifetime Giving



Leadership Donors - Future Giving Levels



# JBU Headwinds

- Enrollment
- Giving
- **Cultural**
- Educational

# WASHINGTON/NATIONAL UPDATE

- CCCU Chair
- Secretary of Education Betsy DeVos
- Fairness to All progress
- California Update

# CULTURAL POLARIZATION

- Washington context
- Protest culture
- National anthem controversies
- Social media context

# JBU POLICY CLARIFICATIONS – LGBT ISSUES

- Examples
- General approach
  - Affirm Biblical ideal
  - Recognize possibility of falling short
  - Respond on case by case situation with grace and truth
  - Reserve right to make separation decision
- Specific approaches to transgendered people
  - Integrity (doctrine of creation)
  - Accommodation (doctrine of sin)
  - Civil rights
- Areas covered
  - Employee expectations
  - Traditional undergraduate student expectations
  - Adult student expectations
  - Housing
  - Athletics
  - External guests
  - Facilities



# Headmaster's Retreat SPRING 2017

---

