

John Brown University TUG Retention Report Fall 2023

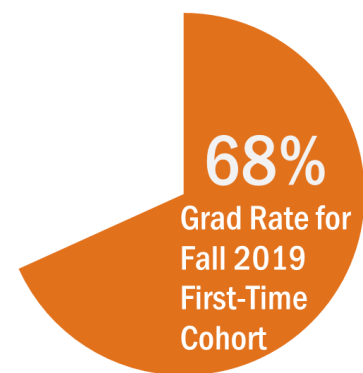
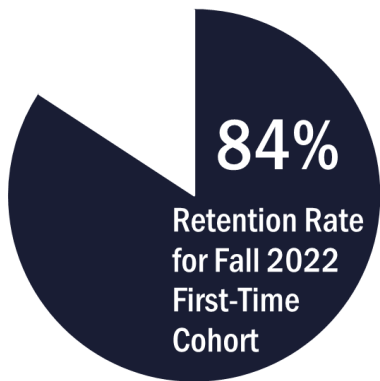


Prepared by Lynette Duncan
Director of Institutional Research & Assessment
October 21, 2023

Introduction

Retention is a key issue facing John Brown University. In our previous Strategic Plan we set a goal of a 70% graduation rate in the traditional undergraduate program. The first step to accomplishing this would be to have at least 82% of the freshman cohort retain to the second year. Since 2011, all cohorts except the 2014, 2018, and 2021 cohorts hit the 82% retention mark. Our latest 6-year graduation rate cohort, the 2017 cohort had a 71% graduation rate. The purpose of this document is to show our retention and graduation rates for students with various characteristics. It is hoped that this data can help inform our intervention strategies with students to help improve their connection to JBU and, hence, their learning and persistence. For each characteristic, there is a graph of the retention rate and a graph of the graduation rate. The primary purpose of the graphs is to visualize trends over time. Following each set of retention and graduation rate graphs is a data table with initial enrollment, number of students retained, percent of students retained, number of students graduated, and percent graduated.

2023 Results



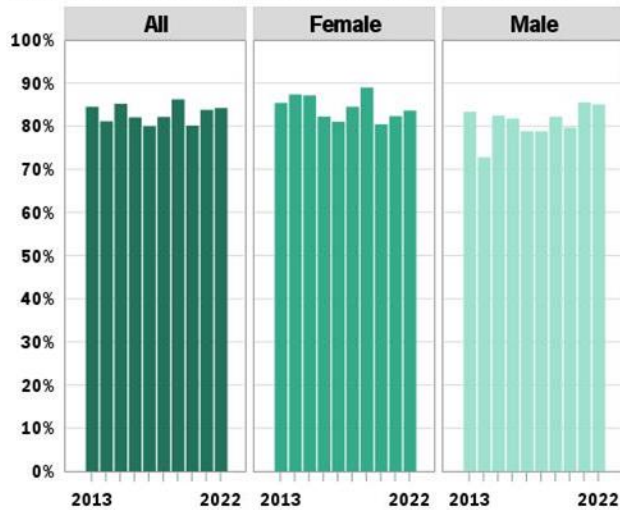
Contents

Introduction.....	2
2023 Results	2
Retention and Graduation Rates: Overall and by Gender.....	3
Retention and Graduation Rates by ACT & SAT Scores: Freshman Only	5
Retention and Graduation Rates by Application Date.....	16
Retention and Graduation Rates by Geography	20
Retention and Graduation Rates by Scholarship Amounts	25
Retention and Graduation Rates by Loan Amounts.....	29
Retention Rates by First-Year On-/Off-Campus Residence.....	33
Retention and Graduation Rates by Athletes	33
Retention and Graduation Rates by Pell Status: Freshman Only	38
Retention and Graduation Rates by Race/Ethnicity: Freshman Only	39
Retention and Graduation Rates by First-Gen Status: Freshman Only	41
Contact Information.....	41

Retention and Graduation Rates: Overall and by Gender

Note that the most recent 6-year graduation rate is from the 2017 cohort. The graphs show the 4-year and 5-year rates for the 2019 and 2018 cohorts, respectively. While transfer students are not included in the official retention and graduation rates, the number of transfer students makes a significant impact on enrollment.

Retention to 2nd Year: Freshman Cohort



Graduation Rate: Freshman Cohort

6-Year Rates for 2013-17 Cohorts; 5-year rate for 2018; 4-year rate for 2019

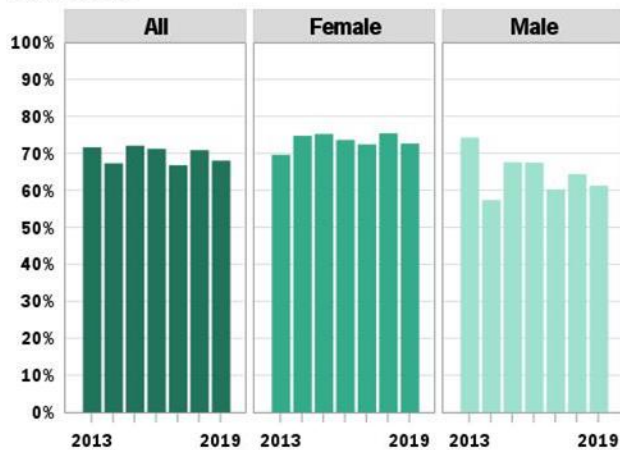
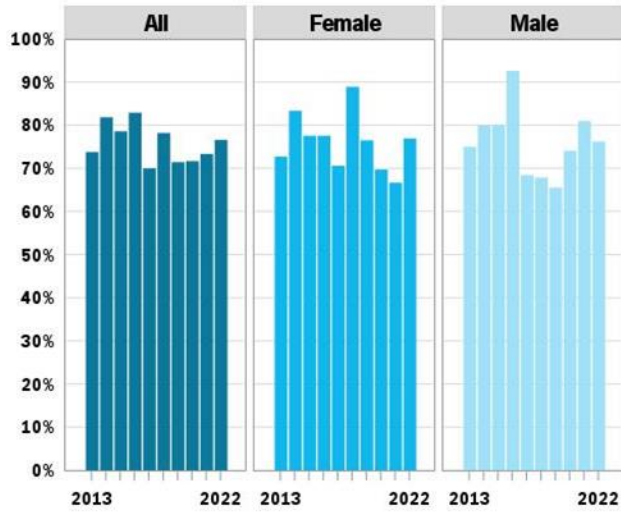


TABLE 1 FRESHMAN RETENTION AND GRADUATION RATES

		New Freshmen					
				Retained to 2nd Year		Graduated	
Group	Entry Year	Initial Enrollment	#	%	#	%	
All	2013	303	256	84%	217	72%	
	2014	318	258	81%	214	67%	
	2015	358	305	85%	258	72%	
	2016	323	265	82%	230	71%	
	2017	325	260	80%	217	67%	
	2018	319	262	82%	226	71%	
	2019	319	275	86%	217	68%	
	2020	312	250	80%			
	2021	333	279	84%			
	2022	304	256	84%			
Female	2013	171	146	85%	119	70%	
	2014	182	159	87%	136	75%	
	2015	210	183	87%	158	75%	
	2016	197	162	82%	145	74%	
	2017	174	141	81%	126	72%	
	2018	187	158	84%	141	75%	
	2019	190	169	89%	138	73%	
	2020	189	152	80%			
	2021	181	149	82%			
	2022	177	148	84%			
Male	2013	132	110	83%	98	74%	
	2014	136	99	73%	78	57%	
	2015	148	122	82%	100	68%	
	2016	126	103	82%	85	67%	
	2017	151	119	79%	91	60%	
	2018	132	104	79%	85	64%	
	2019	129	106	82%	79	61%	
	2020	123	98	80%			
	2021	152	130	86%			
	2022	127	108	85%			

Retention to 2nd Year: Transfer Cohort



Graduation Rate: Transfer Cohort

6-Year Rates for 2013-17 Cohorts; 5-year rate for 2018; 4-year rate for 2019

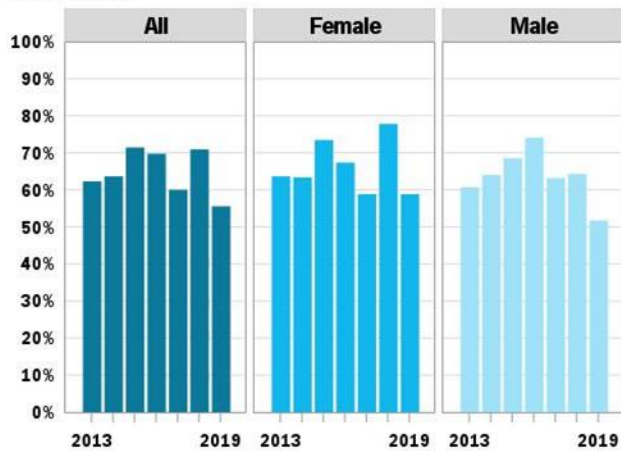


TABLE 2 TRANSFER RETENTION AND GRADUATION RATES

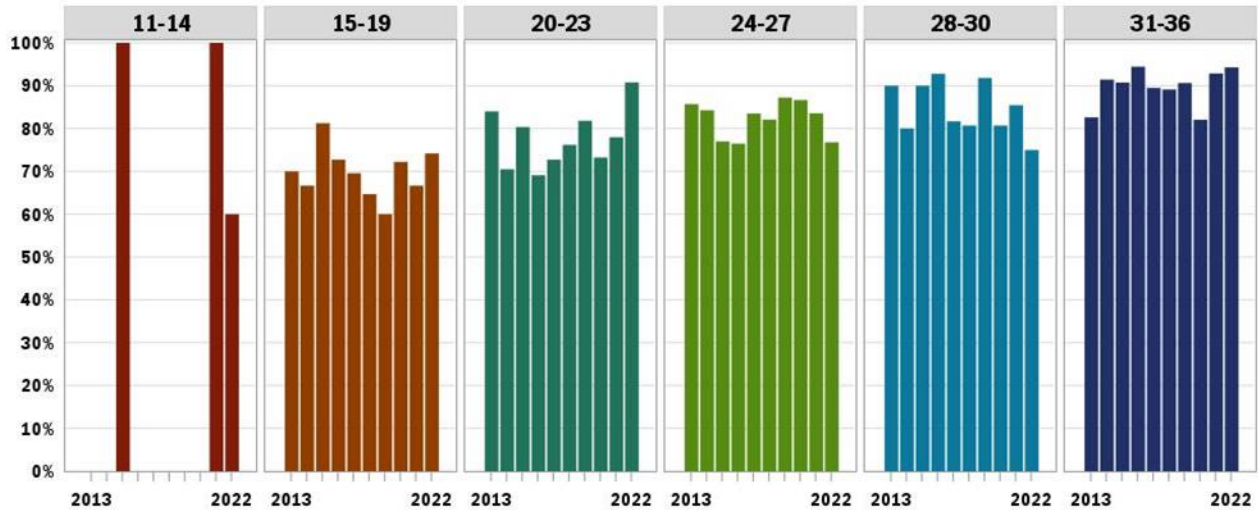
New Transfers						
			Retained to 2nd Year		Graduated	
Group	Entry Year	Initial Enrollment	#	%	#	%
All	2013	61	45	74%	38	62%
	2014	55	45	82%	35	64%
	2015	84	66	79%	60	71%
	2016	76	63	83%	53	70%
	2017	70	49	70%	42	60%
	2018	55	43	78%	39	71%
	2019	63	45	71%	35	56%
	2020	60	43	72%		
	2021	45	33	73%		
	2022	47	36	77%		
Female	2013	33	24	73%	21	64%
	2014	30	25	83%	19	63%
	2015	49	38	78%	36	73%
	2016	49	38	78%	33	67%
	2017	51	36	71%	30	59%
	2018	27	24	89%	21	78%
	2019	34	26	76%	20	59%
	2020	33	23	70%		
	2021	24	16	67%		
	2022	26	20	77%		
Male	2013	28	21	75%	17	61%
	2014	25	20	80%	16	64%
	2015	35	28	80%	24	69%
	2016	27	25	93%	20	74%
	2017	19	13	68%	12	63%
	2018	28	19	68%	18	64%
	2019	29	19	66%	15	52%
	2020	27	20	74%		
	2021	21	17	81%		
	2022	21	16	76%		

Retention and Graduation Rates by ACT & SAT Scores: Freshman Only

We would expect greater retention for students with higher ACT and SAT scores, and the data bear that out. The data suggest that initiatives directed at students with low to mid scores (ACT 20-23 and SAT 900-1100) could help with retention. And the lowest scorers are much less likely to graduate even if they do continue for the second year.

All Freshmen

Retention to 2nd Year: Freshman Cohort by ACT Score



Graduation Rate: Freshman Cohort by ACT Score

6-Year Rates for 2013-17 Cohorts; 5-year rate for 2018; 4-year rate for 2019

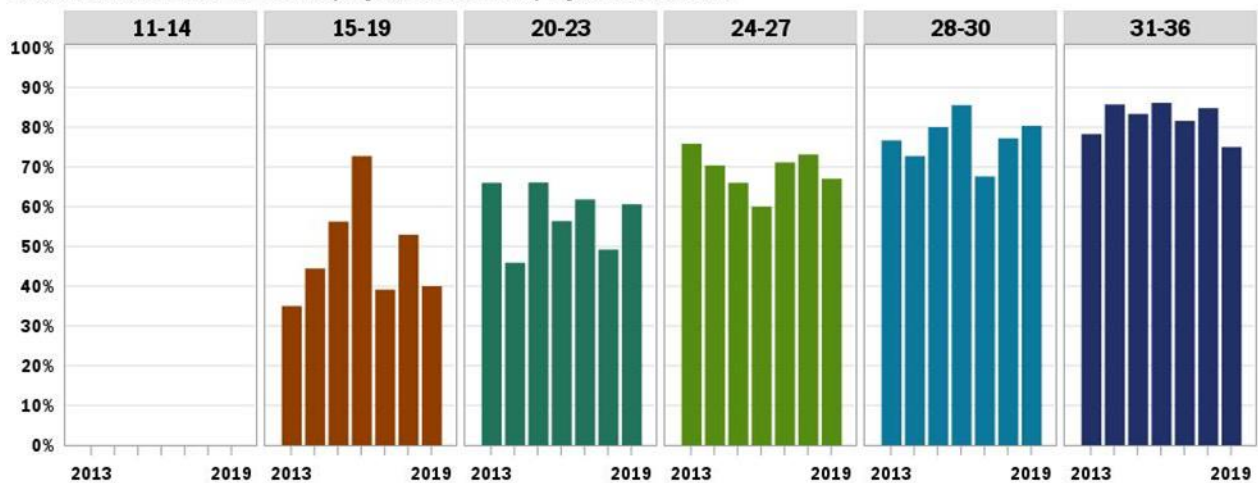


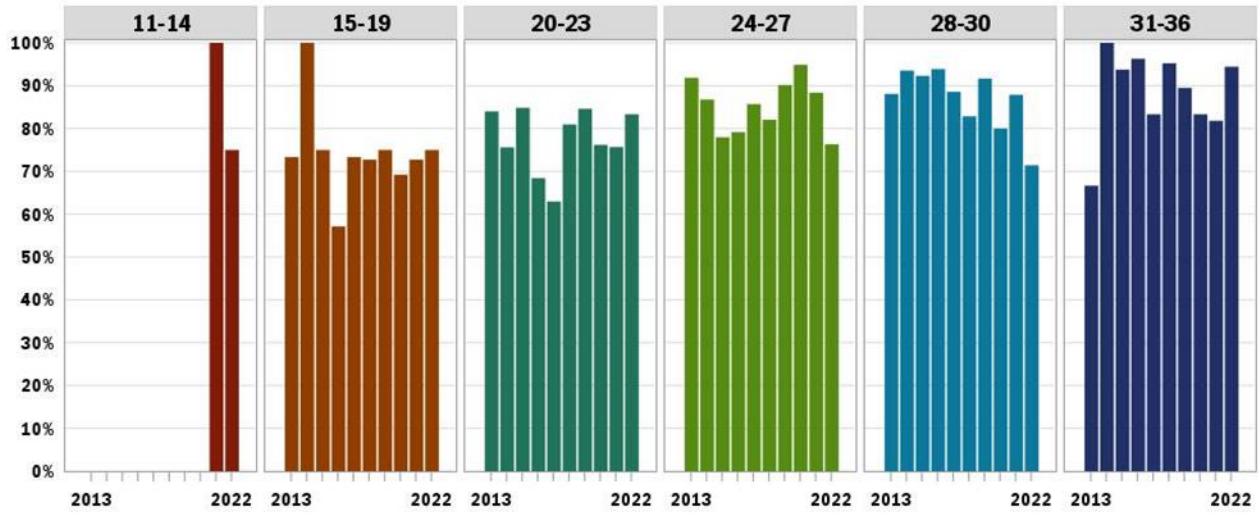
TABLE 3 FRESHMAN RETENTION AND GRADUATION RATES BY ACT SCORE

New Freshmen							
			Retained to 2nd Year		Graduated		
ACT Score Range	Entry Year	Initial Enrollment	#	%	#	%	
11-14	2015	1	1	100%			
	2017	1	0	0%			
	2020	1	0	0%			
	2021	1	1	100%			
	2022	5	3	60%			
15-19	2013	20	14	70%	7	35%	
	2014	9	6	67%	4	44%	
	2015	16	13	81%	9	56%	
	2016	11	8	73%	8	73%	
	2017	23	16	70%	9	39%	
	2018	17	11	65%	9	53%	
	2019	15	9	60%	6	40%	
	2020	18	13	72%			
	2021	21	14	67%			
	2022	31	23	74%			
20-23	2013	50	42	84%	33	66%	
	2014	61	43	70%	28	46%	
	2015	56	45	80%	37	66%	
	2016	55	38	69%	31	56%	
	2017	55	40	73%	34	62%	
	2018	63	48	76%	31	49%	
	2019	66	54	82%	40	61%	
	2020	71	52	73%			
	2021	59	46	78%			
	2022	65	59	91%			
24-27	2013	91	78	86%	69	76%	
	2014	108	91	84%	76	70%	
	2015	100	77	77%	66	66%	
	2016	85	65	76%	51	60%	
	2017	97	81	84%	69	71%	
	2018	67	55	82%	49	73%	
	2019	94	82	87%	63	67%	
	2020	60	52	87%			
	2021	73	61	84%			
	2022	56	43	77%			
28-30	2013	60	54	90%	46	77%	
	2014	55	44	80%	40	73%	

New Freshmen								
			Retained to 2nd Year		Graduated			
ACT Score Range	Entry Year	Initial Enrollment	#	%	#	%		
	2015	80	72	90%	64	80%		
	2016	83	77	93%	71	86%		
	2017	71	58	82%	48	68%		
	2018	57	46	81%	44	77%		
	2019	61	56	92%	49	80%		
	2020	57	46	81%				
	2021	55	47	85%				
	2022	28	21	75%				
	31-36	2013	23	19	83%	18	78%	
		2014	35	32	91%	30	86%	
2015		54	49	91%	45	83%		
2016		36	34	94%	31	86%		
2017		38	34	89%	31	82%		
2018		46	41	89%	39	85%		
2019		32	29	91%	24	75%		
2020		39	32	82%				
2021		28	26	93%				
2022		35	33	94%				

Female Freshmen

Retention to 2nd Year: Freshman Female Cohort by ACT Score



Graduation Rate: Freshman Female Cohort by ACT Score

6-Year Rates for 2013-17 Cohorts; 5-year rate for 2018; 4-year rate for 2019

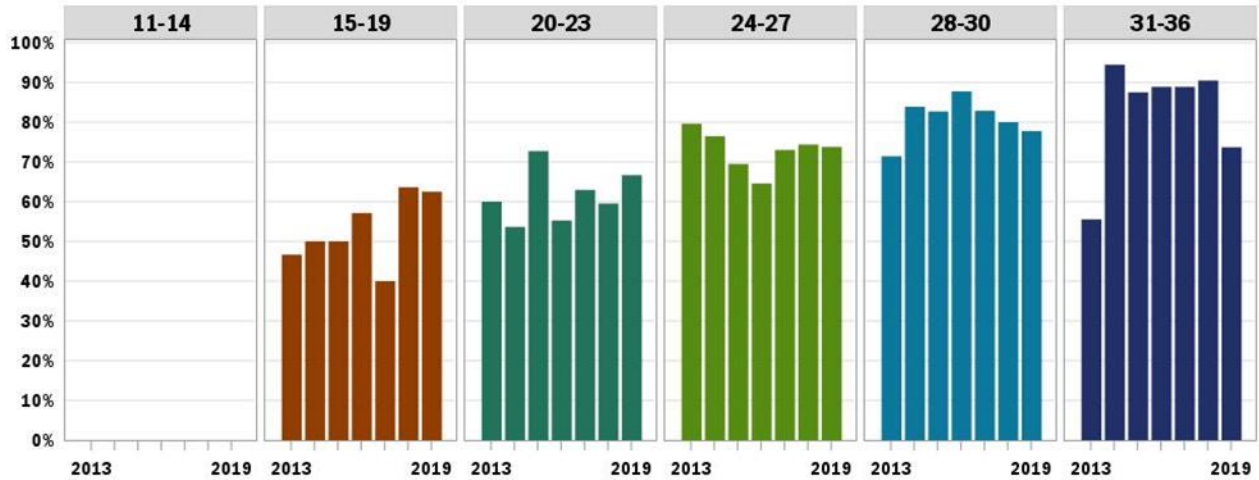


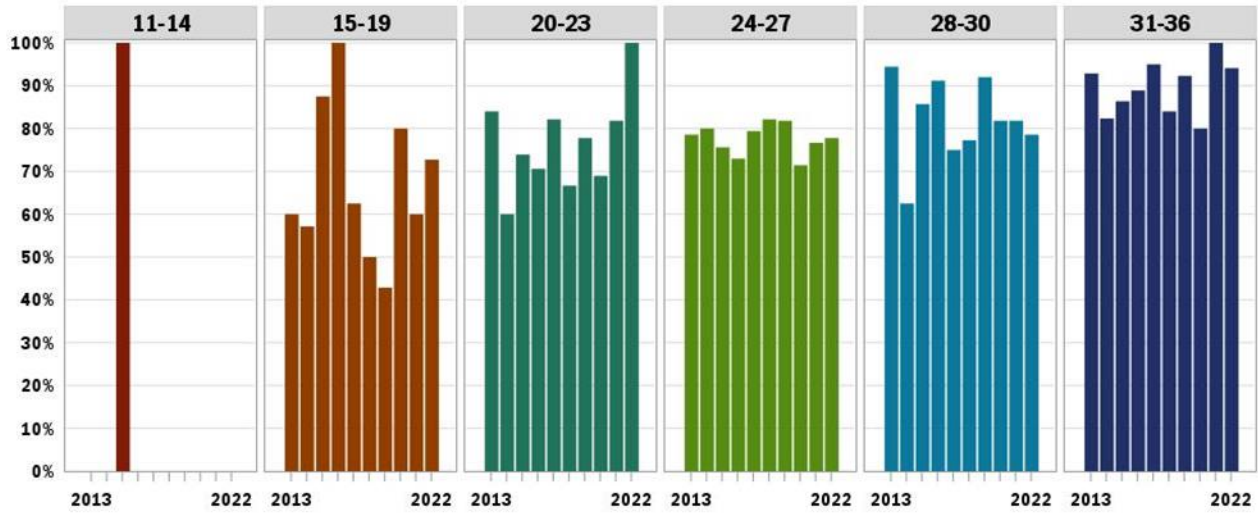
TABLE 4 FEMALE FRESHMAN RETENTION AND GRADUATION RATES BY ACT SCORE

New Freshmen							
			Retained to 2nd Year		Graduated		
ACT Score Range	Entry Year	Initial Enrollment	#	%	#	%	
11-14	2021	1	1	100%			
	2022	4	3	75%			
15-19	2013	15	11	73%	7	47%	
	2014	2	2	100%	1	50%	
	2015	8	6	75%	4	50%	
	2016	7	4	57%	4	57%	
	2017	15	11	73%	6	40%	
	2018	11	8	73%	7	64%	
	2019	8	6	75%	5	63%	
	2020	13	9	69%			
	2021	11	8	73%			
	2022	20	15	75%			
20-23	2013	25	21	84%	15	60%	
	2014	41	31	76%	22	54%	
	2015	33	28	85%	24	73%	
	2016	38	26	68%	21	55%	
	2017	27	17	63%	17	63%	
	2018	42	34	81%	25	60%	
	2019	39	33	85%	26	67%	
	2020	42	32	76%			
	2021	37	28	76%			
	2022	36	30	83%			
24-27	2013	49	45	92%	39	80%	
	2014	68	59	87%	52	76%	
	2015	59	46	78%	41	69%	
	2016	48	38	79%	31	65%	
	2017	63	54	86%	46	73%	
	2018	39	32	82%	29	74%	
	2019	61	55	90%	45	74%	
	2020	39	37	95%			
	2021	43	38	88%			
	2022	38	29	76%			
28-30	2013	42	37	88%	30	71%	
	2014	31	29	94%	26	84%	
	2015	52	48	92%	43	83%	
	2016	49	46	94%	43	88%	
	2017	35	31	89%	29	83%	

New Freshmen							
			Retained to 2nd Year		Graduated		
ACT Score Range	Entry Year	Initial Enrollment	#	%	#	%	
	2018	35	29	83%	28	80%	
	2019	36	33	92%	28	78%	
	2020	35	28	80%			
	2021	33	29	88%			
	2022	14	10	71%			
	31-36	2013	9	6	67%	5	56%
	2014	18	18	100%	17	94%	
	2015	32	30	94%	28	88%	
	2016	27	26	96%	24	89%	
	2017	18	15	83%	16	89%	
	2018	21	20	95%	19	90%	
	2019	19	17	89%	14	74%	
	2020	24	20	83%			
	2021	11	9	82%			
	2022	18	17	94%			

Male Freshmen

Retention to 2nd Year: Freshman Male Cohort by ACT Score



Graduation Rate: Freshman Male Cohort by ACT Score

6-Year Rates for 2013-17 Cohorts; 5-year rate for 2018; 4-year rate for 2019

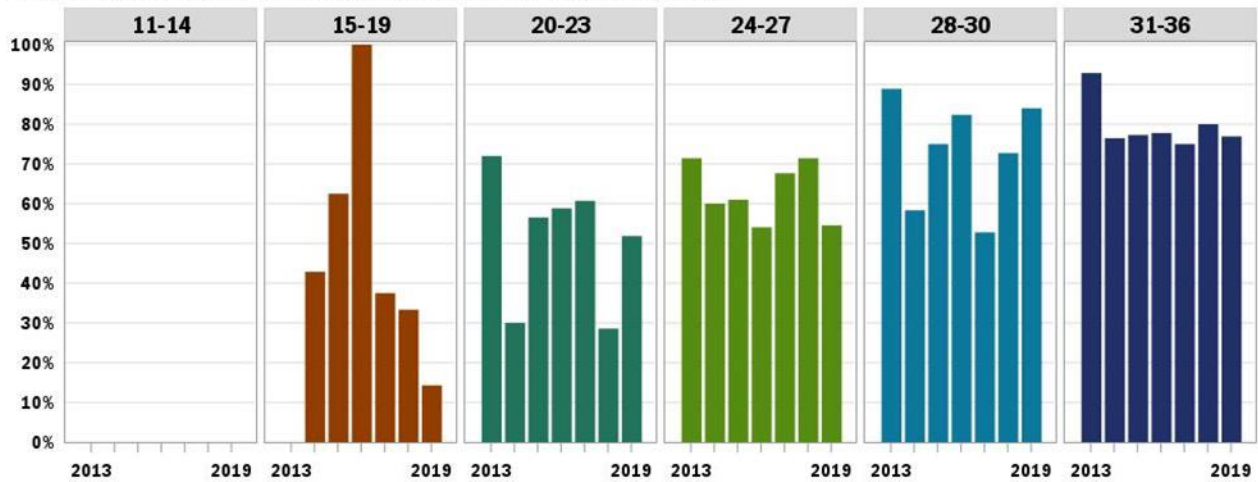
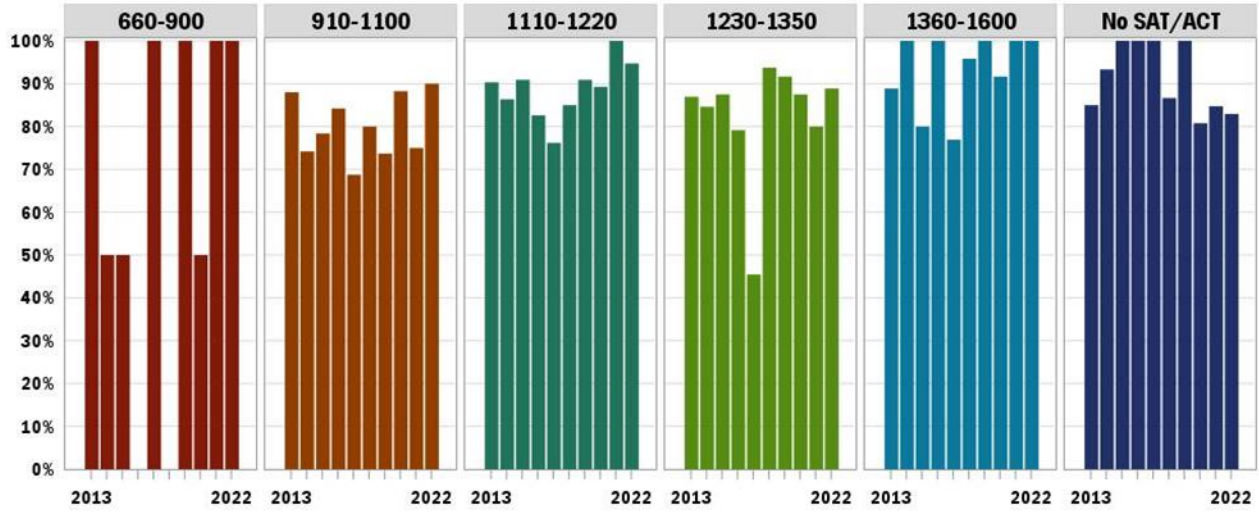


TABLE 5 MALE FRESHMAN RETENTION AND GRADUATION RATES BY ACT SCORE

New Freshmen						
			Retained to 2nd Year		Graduated	
ACT Score Range	Entry Year	Initial Enrollment	#	%	#	%
11-14	2015	1	1	100%		
	2017	1	0	0%		
	2020	1	0	0%		
	2022	1	0	0%		
15-19	2013	5	3	60%		
	2014	7	4	57%	3	43%
	2015	8	7	88%	5	63%
	2016	4	4	100%	4	100%
	2017	8	5	63%	3	38%
	2018	6	3	50%	2	33%
	2019	7	3	43%	1	14%
	2020	5	4	80%		
20-23	2013	25	21	84%	18	72%
	2014	20	12	60%	6	30%
	2015	23	17	74%	13	57%
	2016	17	12	71%	10	59%
	2017	28	23	82%	17	61%
	2018	21	14	67%	6	29%
	2019	27	21	78%	14	52%
	2020	29	20	69%		
24-27	2013	42	33	79%	30	71%
	2014	40	32	80%	24	60%
	2015	41	31	76%	25	61%
	2016	37	27	73%	20	54%
	2017	34	27	79%	23	68%
	2018	28	23	82%	20	71%
	2019	33	27	82%	18	55%
	2020	21	15	71%		
28-30	2013	18	17	94%	16	89%

New Freshmen						
			Retained to 2nd Year		Graduated	
ACT Score Range	Entry Year	Initial Enrollment	#	%	#	%
	2014	24	15	63%	14	58%
	2015	28	24	86%	21	75%
	2016	34	31	91%	28	82%
	2017	36	27	75%	19	53%
	2018	22	17	77%	16	73%
	2019	25	23	92%	21	84%
	2020	22	18	82%		
	2021	22	18	82%		
	2022	14	11	79%		
31-36	2013	14	13	93%	13	93%
	2014	17	14	82%	13	76%
	2015	22	19	86%	17	77%
	2016	9	8	89%	7	78%
	2017	20	19	95%	15	75%
	2018	25	21	84%	20	80%
	2019	13	12	92%	10	77%
	2020	15	12	80%		
	2021	17	17	100%		
	2022	17	16	94%		

Retention to 2nd Year: Freshman Cohort by SAT Score



Graduation Rate: Freshman Cohort by SAT Score

6-Year Rates for 2013-17 Cohorts; 5-year rate for 2018; 4-year rate for 2019

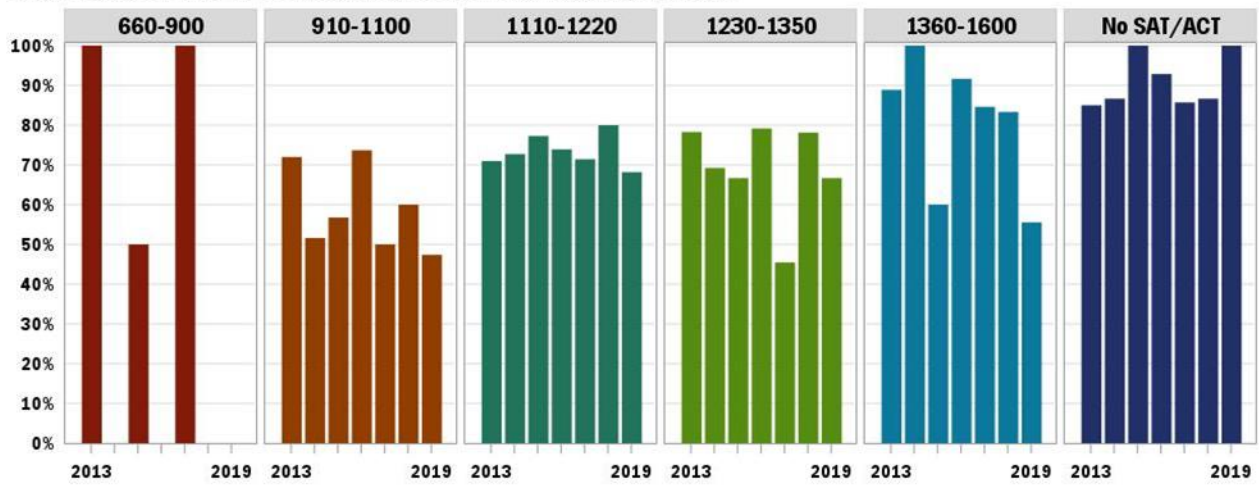
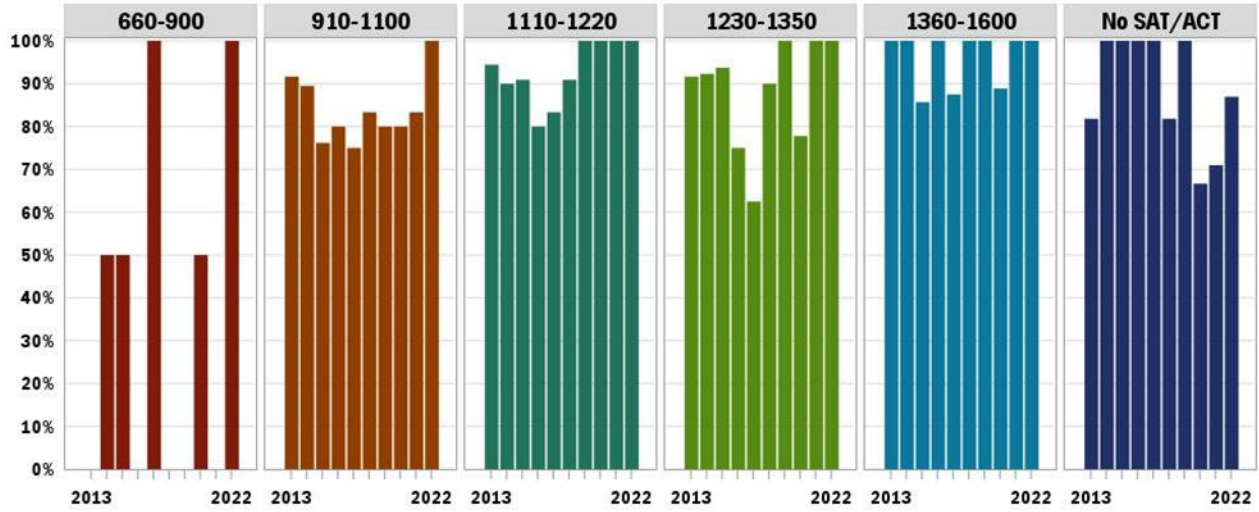


TABLE 6 FRESHMAN RETENTION AND GRADUATION RATES BY SAT SCORE

New Freshmen						
SAT Score Range	Entry Year	Initial Enrollment	Retained to 2nd Year		Graduated	
			#	%	#	%
660-900	2013	2	2	100%	2	100%
	2014	2	1	50%		
	2015	2	1	50%	1	50%
	2016	1	0	0%		
	2017	2	2	100%	2	100%
	2019	2	2	100%		
	2020	2	1	50%		
	2021	1	1	100%		
	2022	2	2	100%		
	910-1100	2013	25	22	88%	18
2014		31	23	74%	16	52%
2015		37	29	78%	21	57%
2016		19	16	84%	14	74%
2017		16	11	69%	8	50%
2018		20	16	80%	12	60%
2019		19	14	74%	9	47%
2020		17	15	88%		
2021		12	9	75%		
2022		10	9	90%		
1110-1220	2013	31	28	90%	22	71%
	2014	22	19	86%	16	73%
	2015	22	20	91%	17	77%
	2016	23	19	83%	17	74%
	2017	21	16	76%	15	71%
	2018	20	17	85%	16	80%
	2019	22	20	91%	15	68%
	2020	28	25	89%		
	2021	18	18	100%		
	2022	19	18	95%		
1230-1350	2013	23	20	87%	18	78%
	2014	26	22	85%	18	69%
	2015	24	21	88%	16	67%
	2016	24	19	79%	19	79%
	2017	11	5	45%	5	45%
	2018	32	30	94%	25	78%
	2019	24	22	92%	16	67%
2020	16	14	88%			
2021	15	12	80%			

New Freshmen						
SAT Score Range	Entry Year	Initial Enrollment	Retained to 2nd Year		Graduated	
			#	%	#	%
	2022	9	8	89%		
1360-1600	2013	9	8	89%	8	89%
	2014	2	2	100%	2	100%
	2015	10	8	80%	6	60%
	2016	12	12	100%	11	92%
	2017	13	10	77%	11	85%
	2018	24	23	96%	20	83%
	2019	9	9	100%	5	56%
	2020	12	11	92%		
	2021	6	6	100%		
	2022	14	14	100%		
No SAT/ACT	2013	20	17	85%	17	85%
	2014	15	14	93%	13	87%
	2015	11	11	100%	11	100%
	2016	14	14	100%	13	93%
	2017	14	14	100%	12	86%
	2018	15	13	87%	13	87%
	2019	11	11	100%	11	100%
	2020	26	21	81%		
	2021	59	50	85%		
	2022	41	34	83%		

Retention to 2nd Year: Freshman Female Cohort by SAT Score



Graduation Rate: Freshman Female Cohort by SAT Score

6-Year Rates for 2013-17 Cohorts; 5-year rate for 2018; 4-year rate for 2019

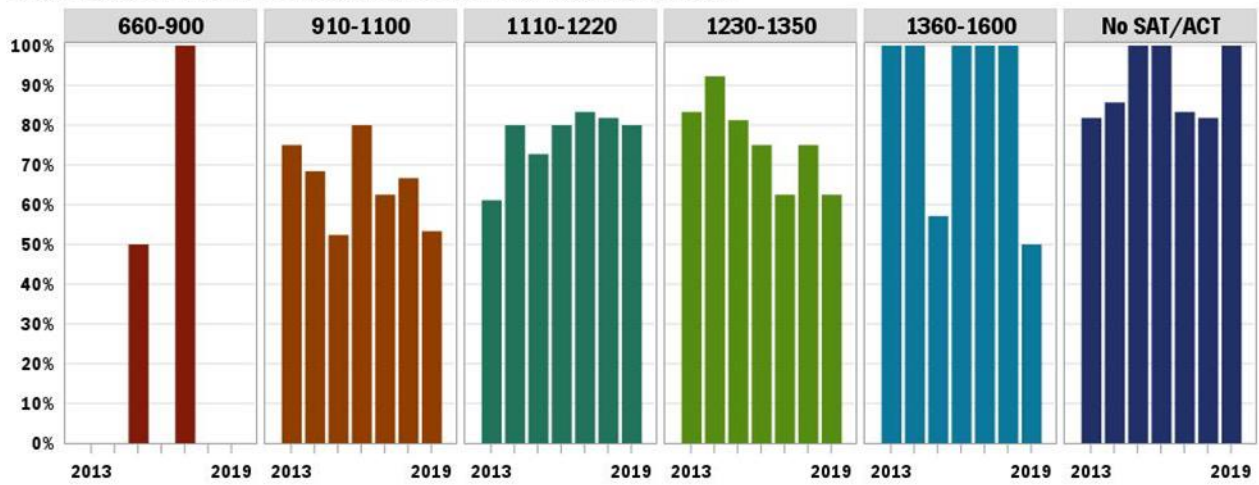
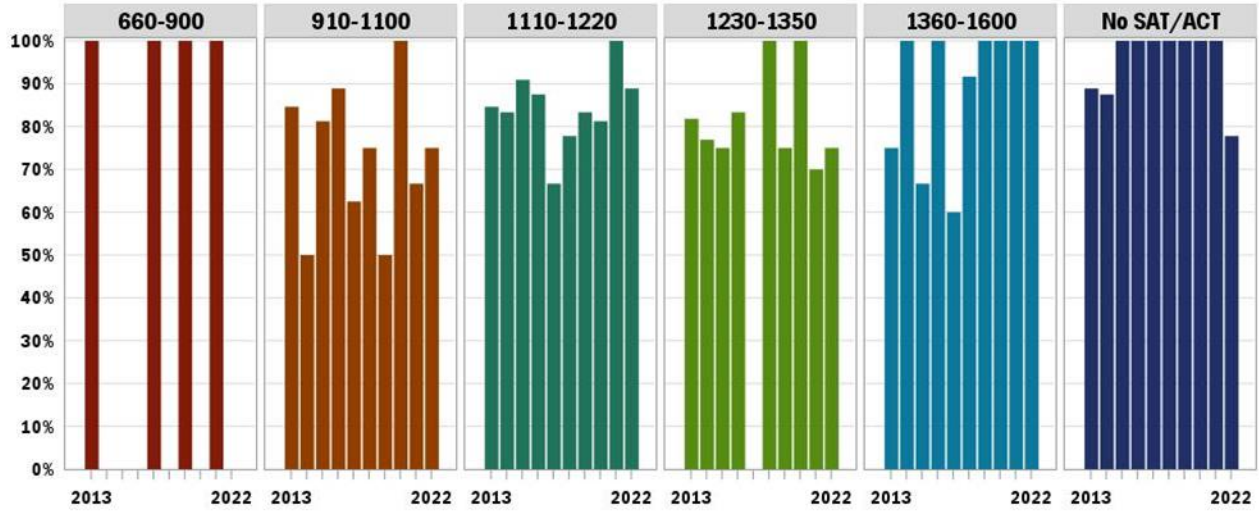


TABLE 7 FEMALE FRESHMAN RETENTION AND GRADUATION RATES BY SAT SCORE

New Freshmen						
SAT Score Range	Entry Year	Initial Enrollment	Retained to 2nd Year		Graduated	
			#	%	#	%
660-900	2014	2	1	50%		
	2015	2	1	50%	1	50%
	2016	1	0	0%		
	2017	1	1	100%	1	100%
	2020	2	1	50%		
	2022	2	2	100%		
910-1100	2013	12	11	92%	9	75%
	2014	19	17	89%	13	68%
	2015	21	16	76%	11	52%
	2016	10	8	80%	8	80%
	2017	8	6	75%	5	63%
	2018	12	10	83%	8	67%
	2019	15	12	80%	8	53%
	2020	10	8	80%		
	2021	6	5	83%		
	2022	6	6	100%		
1110-1220	2013	18	17	94%	11	61%
	2014	10	9	90%	8	80%
	2015	11	10	91%	8	73%
	2016	15	12	80%	12	80%
	2017	12	10	83%	10	83%
	2018	11	10	91%	9	82%
	2019	10	10	100%	8	80%
	2020	12	12	100%		
	2021	8	8	100%		
	2022	10	10	100%		
1230-1350	2013	12	11	92%	10	83%
	2014	13	12	92%	12	92%
	2015	16	15	94%	13	81%
	2016	12	9	75%	9	75%
	2017	8	5	63%	5	63%
	2018	20	18	90%	15	75%
	2019	16	16	100%	10	63%
	2020	9	7	78%		
1360-1600	2013	5	5	100%	5	100%
	2014	1	1	100%	1	100%

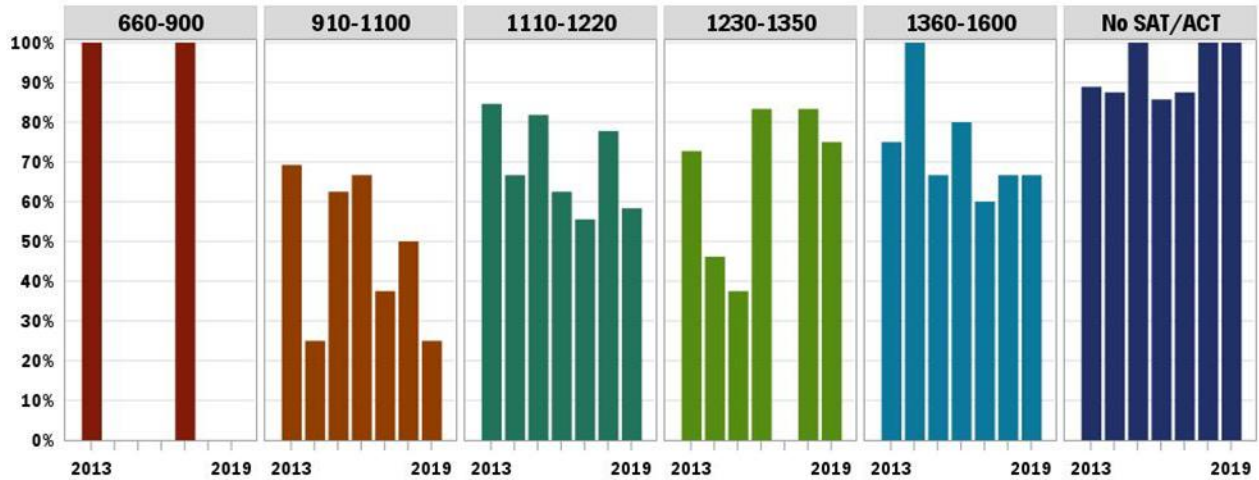
New Freshmen						
SAT Score Range	Entry Year	Initial Enrollment	Retained to 2nd Year		Graduated	
			#	%	#	%
	2015	7	6	86%	4	57%
	2016	7	7	100%	7	100%
	2017	8	7	88%	8	100%
	2018	12	12	100%	12	100%
	2019	6	6	100%	3	50%
	2020	9	8	89%		
	2021	1	1	100%		
	2022	8	8	100%		
No SAT/ACT	2013	11	9	82%	9	82%
	2014	7	7	100%	6	86%
	2015	6	6	100%	6	100%
	2016	7	7	100%	7	100%
	2017	6	6	100%	5	83%
	2018	11	9	82%	9	82%
	2019	4	4	100%	4	100%
	2020	15	10	67%		
	2021	31	22	71%		
	2022	23	20	87%		

Retention to 2nd Year: Freshman Male Cohort by SAT Score



Graduation Rate: Freshman Male Cohort by SAT Score

6-Year Rates for 2013-17 Cohorts; 5-year rate for 2018; 4-year rate for 2019



**TABLE 8 MALE FRESHMAN RETENTION AND GRADUATION RATES
BY SAT SCORE**

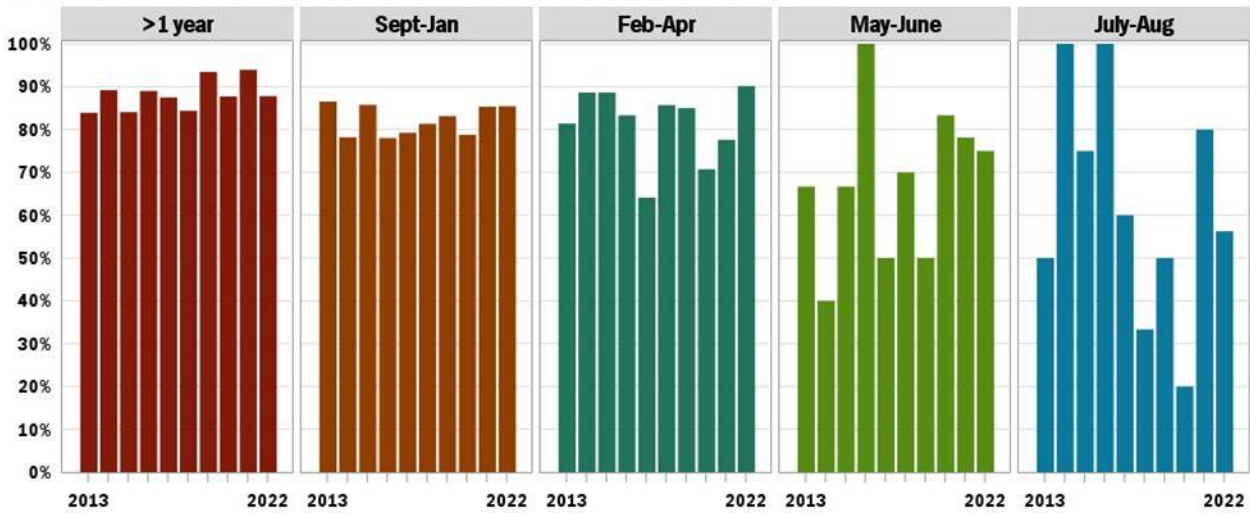
New Freshmen						
SAT Score Range	Entry Year	Initial Enrollment	Retained to 2nd Year		Graduated	
			#	%	#	%
660-900	2013	2	2	100%	2	100%
	2017	1	1	100%	1	100%
	2019	2	2	100%		
	2021	1	1	100%		
910-1100	2013	13	11	85%	9	69%
	2014	12	6	50%	3	25%
	2015	16	13	81%	10	63%
	2016	9	8	89%	6	67%
	2017	8	5	63%	3	38%
	2018	8	6	75%	4	50%
	2019	4	2	50%	1	25%
	2020	7	7	100%		
	2021	6	4	67%		
	2022	4	3	75%		
1110-1220	2013	13	11	85%	11	85%
	2014	12	10	83%	8	67%
	2015	11	10	91%	9	82%
	2016	8	7	88%	5	63%
	2017	9	6	67%	5	56%
	2018	9	7	78%	7	78%
	2019	12	10	83%	7	58%
	2020	16	13	81%		
	2021	10	10	100%		
	2022	9	8	89%		
1230-1350	2013	11	9	82%	8	73%
	2014	13	10	77%	6	46%
	2015	8	6	75%	3	38%
	2016	12	10	83%	10	83%
	2017	3	0	0%		
	2018	12	12	100%	10	83%
	2019	8	6	75%	6	75%
	2020	7	7	100%		
	2021	10	7	70%		
	2022	4	3	75%		
1360-1600	2013	4	3	75%	3	75%
	2014	1	1	100%	1	100%
	2015	3	2	67%	2	67%
	2016	5	5	100%	4	80%

New Freshmen						
SAT Score Range	Entry Year	Initial Enrollment	Retained to 2nd Year		Graduated	
			#	%	#	%
	2017	5	3	60%	3	60%
	2018	12	11	92%	8	67%
	2019	3	3	100%	2	67%
	2020	3	3	100%		
	2021	5	5	100%		
	2022	6	6	100%		
No SAT/ACT	2013	9	8	89%	8	89%
	2014	8	7	88%	7	88%
	2015	5	5	100%	5	100%
	2016	7	7	100%	6	86%
	2017	8	8	100%	7	88%
	2018	4	4	100%	4	100%
	2019	7	7	100%	7	100%
	2020	11	11	100%		
	2021	28	28	100%		
	2022	18	14	78%		

Retention and Graduation Rates by Application Date

Students matriculating as first time freshman persist at a higher rate if they get into the application process early. This has become increasingly true also for transfer students. Graduation rates have not been consistent across categories and years

Retention to 2nd Year: Freshman Cohort by Application Date



Graduation Rate: Freshman Cohort by Application Date

6-Year Rates for 2013-17 Cohorts; 5-year rate for 2018; 4-year rate for 2019

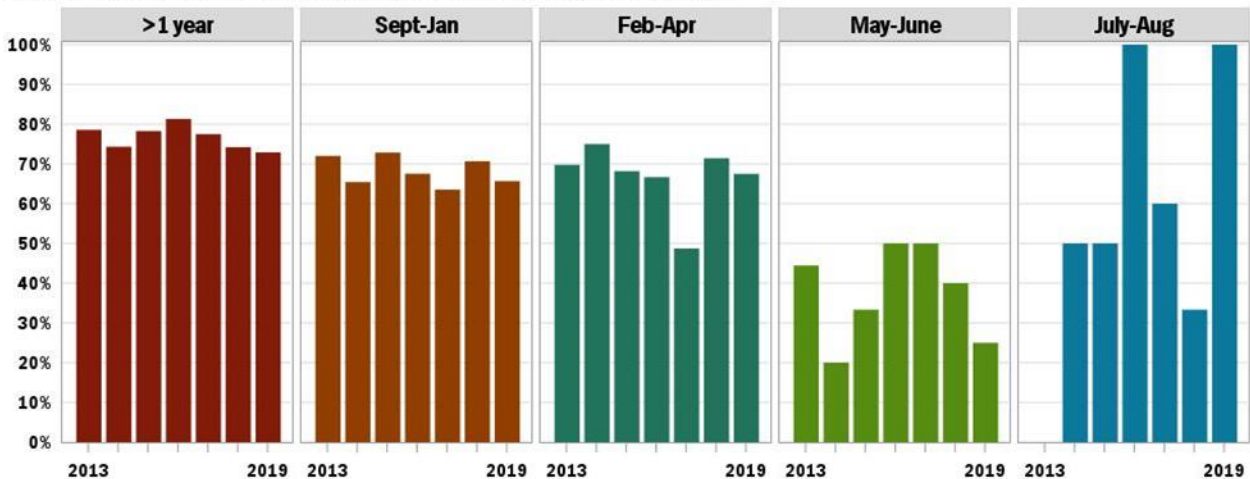
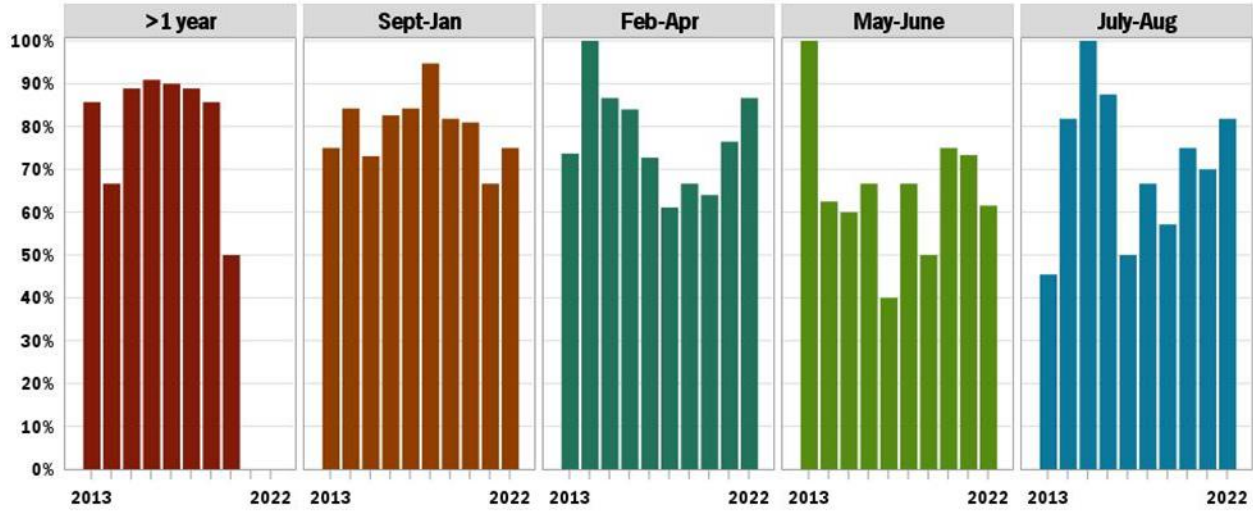


TABLE 9 FRESHMAN RETENTION AND GRADUATION RATES BY APPLICATION DATE

New Freshmen							
			Retained to 2nd Year		Graduated		
App Timing	Entry Year	Initial Enrollment	#	%	#	%	
>1 year	2013	56	47	84%	44	79%	
	2014	74	66	89%	55	74%	
	2015	69	58	84%	54	78%	
	2016	91	81	89%	74	81%	
	2017	120	105	88%	93	78%	
	2018	128	108	84%	95	74%	
	2019	107	100	93%	78	73%	
	2020	114	100	88%			
	2021	33	31	94%			
	2022	41	36	88%			
Sept-Jan	2013	193	167	87%	139	72%	
	2014	188	147	78%	123	65%	
	2015	232	199	86%	169	73%	
	2016	191	149	78%	129	68%	
	2017	159	126	79%	101	64%	
	2018	150	122	81%	106	71%	
	2019	166	138	83%	109	66%	
	2020	146	115	79%			
	2021	191	163	85%			
	2022	158	135	85%			
Feb-Apr	2013	43	35	81%	30	70%	
	2014	44	39	89%	33	75%	
	2015	44	39	89%	30	68%	
	2016	36	30	83%	24	67%	
	2017	39	25	64%	19	49%	
	2018	28	24	86%	20	71%	
	2019	40	34	85%	27	68%	
	2020	41	29	71%			
	2021	67	52	78%			
	2022	61	55	90%			
May-June	2013	9	6	67%	4	44%	
	2014	10	4	40%	2	20%	
	2015	9	6	67%	3	33%	

New Freshmen							
			Retained to 2nd Year		Graduated		
App Timing	Entry Year	Initial Enrollment	#	%	#	%	
	2016	4	4	100%	2	50%	
	2017	2	1	50%	1	50%	
	2018	10	7	70%	4	40%	
	2019	4	2	50%	1	25%	
	2020	6	5	83%			
	2021	32	25	78%			
	2022	28	21	75%			
July-Aug	2013	2	1	50%			
	2014	2	2	100%	1	50%	
	2015	4	3	75%	2	50%	
	2016	1	1	100%	1	100%	
	2017	5	3	60%	3	60%	
	2018	3	1	33%	1	33%	
	2019	2	1	50%	2	100%	
	2020	5	1	20%			
	2021	10	8	80%			
	2022	16	9	56%			

Retention to 2nd Year: Transfer Cohort by Application Date



Graduation Rate: Transfer Cohort by Application Date

6-Year Rates for 2013-17 Cohorts; 5-year rate for 2018; 4-year rate for 2019

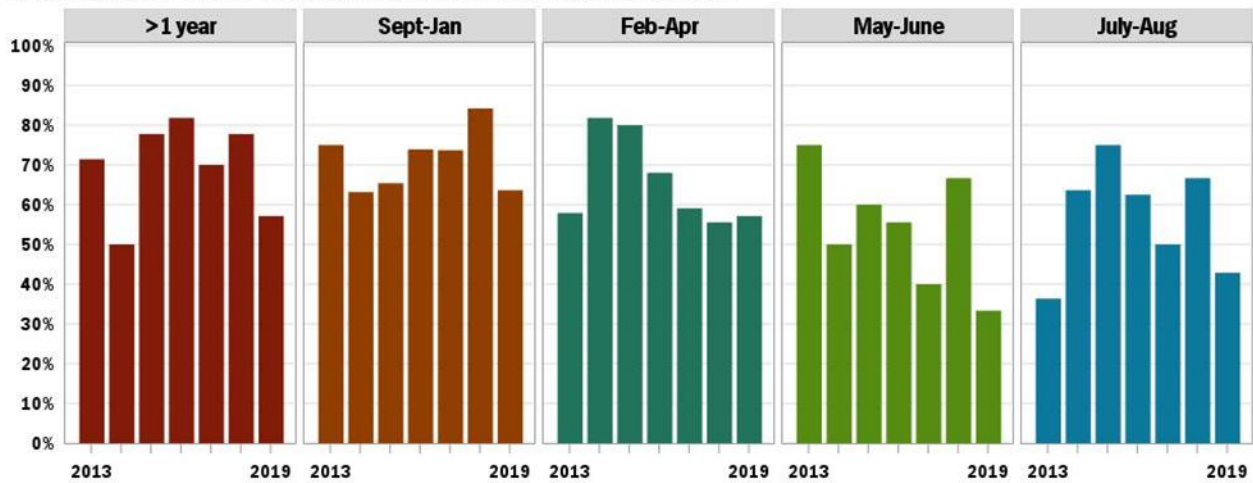


TABLE 10 TRANSFER RETENTION AND GRADUATION RATES BY APPLICATION DATE

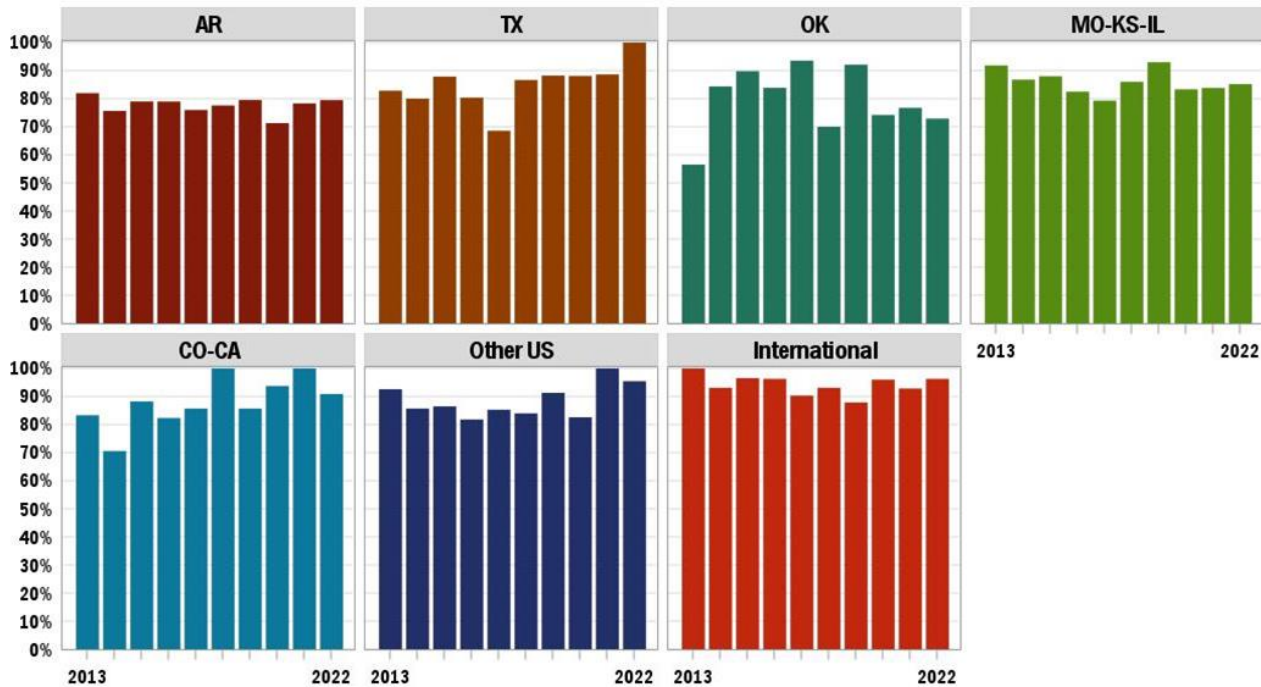
New Transfers							
			Retained to 2nd Year		Graduated		
App Timing	Entry Year	Initial Enrollment	#	%	#	%	
>1 year	2013	7	6	86%	5	71%	
	2014	6	4	67%	3	50%	
	2015	9	8	89%	7	78%	
	2016	11	10	91%	9	82%	
	2017	10	9	90%	7	70%	
	2018	9	8	89%	7	78%	
	2019	7	6	86%	4	57%	
	2020	2	1	50%			
	2021	7	6	86%	4	57%	
	2022	2	1	50%			
Sept-Jan	2013	16	12	75%	12	75%	
	2014	19	16	84%	12	63%	
	2015	26	19	73%	17	65%	
	2016	23	19	83%	17	74%	
	2017	19	16	84%	14	74%	
	2018	19	18	95%	16	84%	
	2019	22	18	82%	14	64%	
	2020	21	17	81%			
	2021	3	2	67%			
	2022	8	6	75%			
Feb-Apr	2013	19	14	74%	11	58%	
	2014	11	11	100%	9	82%	
	2015	30	26	87%	24	80%	
	2016	25	21	84%	17	68%	
	2017	22	16	73%	13	59%	
	2018	18	11	61%	10	56%	
	2019	21	14	67%	12	57%	
	2020	25	16	64%			
	2021	17	13	76%			
	2022	15	13	87%			
May-June	2013	8	8	100%	6	75%	
	2014	8	5	63%	4	50%	
	2015	15	9	60%	9	60%	
	2016	9	6	67%	5	56%	
	2017	15	6	40%	6	40%	
	2018	6	4	67%	4	67%	
	2019	6	3	50%	2	33%	
	2020	8	6	75%			
	2021	15	11	73%			
	2022	13	8	62%			

New Transfers						
			Retained to 2nd Year		Graduated	
App Timing	Entry Year	Initial Enrollment	#	%	#	%
July-Aug	2013	11	5	45%	4	36%
	2014	11	9	82%	7	64%
	2015	4	4	100%	3	75%
	2016	8	7	88%	5	63%
	2017	4	2	50%	2	50%
	2018	3	2	67%	2	67%
	2019	7	4	57%	3	43%
	2020	4	3	75%		
	2021	10	7	70%		
	2022	11	9	82%		

Retention and Graduation Rates by Geography

The majority of our TUG students are from Arkansas, Texas, and Oklahoma. The retention rate for Freshman students from Arkansas has remained steady for the past 5 years.

Retention to 2nd Year: Freshman Cohort by Geography



Graduation Rate: Freshman Cohort by Geography

6-Year Rates for 2013-17 Cohorts; 5-year rate for 2018; 4-year rate for 2019

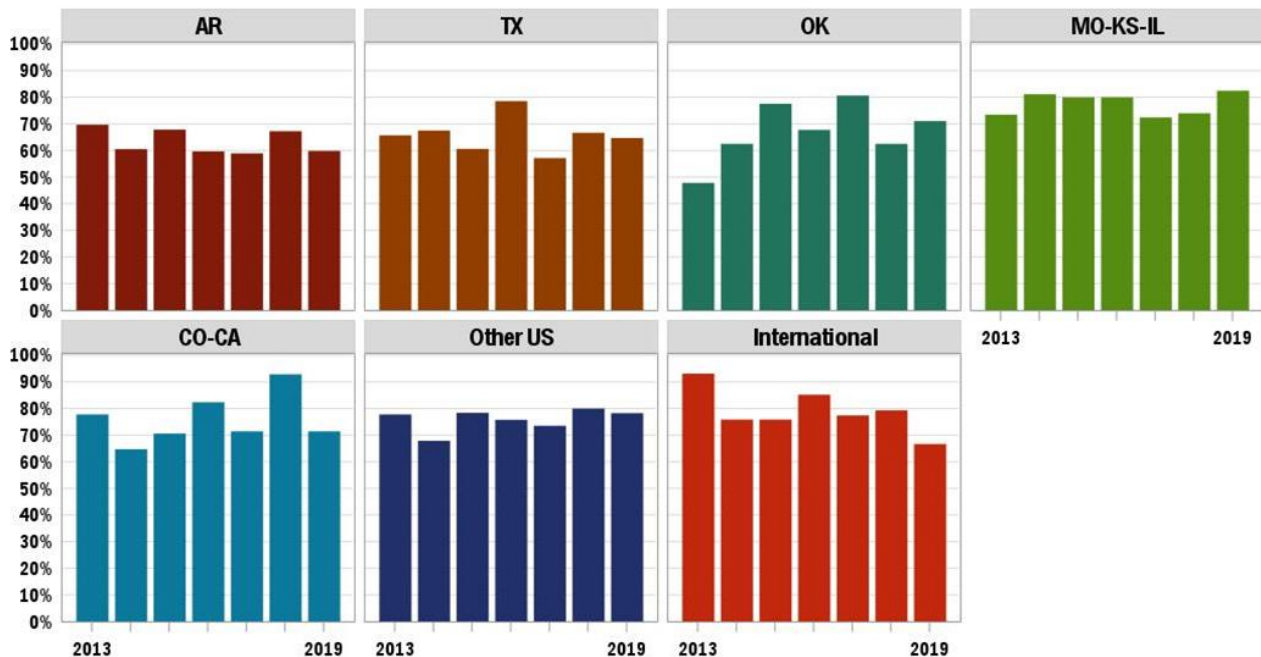
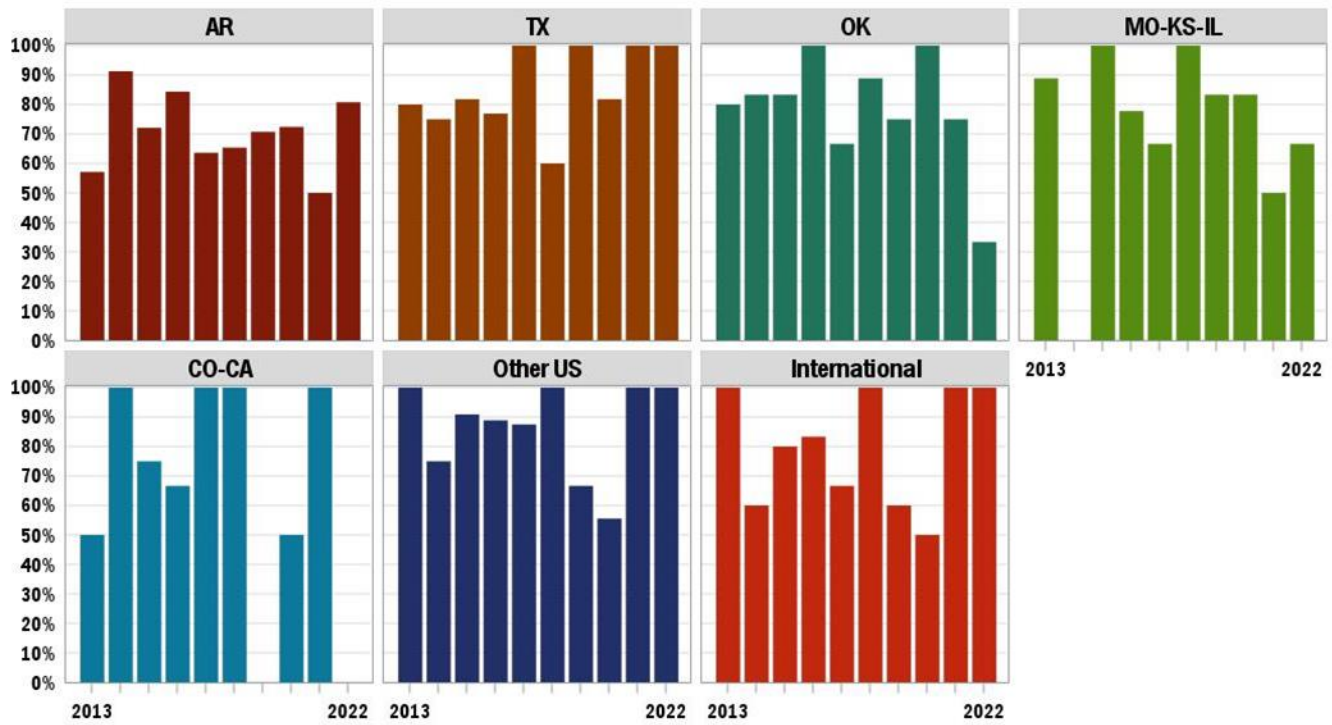


TABLE 11 FRESHMAN RETENTION AND GRADUATION RATES BY GEOGRAPHY

New Freshmen						
State	Entry Year	Initial Enrollment	Retained to 2nd Year		Graduated	
			#	%	#	%
AR	2013	122	100	82%	85	70%
	2014	119	90	76%	72	61%
	2015	143	113	79%	97	68%
	2016	119	94	79%	71	60%
	2017	129	98	76%	76	59%
	2018	116	90	78%	78	67%
	2019	127	101	80%	76	60%
	2020	115	82	71%		
	2021	120	94	78%		
	2022	117	93	79%		
CO-CA	2013	18	15	83%	14	78%
	2014	17	12	71%	11	65%
	2015	17	15	88%	12	71%
	2016	17	14	82%	14	82%
	2017	7	6	86%	5	71%
	2018	14	14	100%	13	93%
	2019	7	6	86%	5	71%
	2020	16	15	94%		
	2021	11	11	100%		
	2022	11	10	91%		
Internation al	2013	29	29	100%	27	93%
	2014	29	27	93%	22	76%
	2015	29	28	97%	22	76%
	2016	27	26	96%	23	85%
	2017	31	28	90%	24	77%
	2018	29	27	93%	23	79%
	2019	33	29	88%	22	67%
	2020	25	24	96%		
	2021	28	26	93%		
	2022	27	26	96%		
MO-KS-IL	2013	49	45	92%	36	73%
	2014	53	46	87%	43	81%
	2015	50	44	88%	40	80%
	2016	40	33	83%	32	80%
	2017	58	46	79%	42	72%
	2018	50	43	86%	37	74%
	2019	57	53	93%	47	82%

New Freshmen						
State	Entry Year	Initial Enrollment	Retained to 2nd Year		Graduated	
			#	%	#	%
	2020	60	50	83%		
	2021	68	57	84%		
	2022	54	46	85%		
OK	2013	23	13	57%	11	48%
	2014	32	27	84%	20	63%
	2015	49	44	90%	38	78%
	2016	31	26	84%	21	68%
	2017	31	29	94%	25	81%
	2018	40	28	70%	25	63%
	2019	38	35	92%	27	71%
	2020	31	23	74%		
	2021	43	33	77%		
	2022	48	35	73%		
Other US	2013	27	25	93%	21	78%
	2014	28	24	86%	19	68%
	2015	37	32	86%	29	78%
	2016	33	27	82%	25	76%
	2017	34	29	85%	25	74%
	2018	25	21	84%	20	80%
	2019	23	21	91%	18	78%
	2020	23	19	83%		
	2021	19	19	100%		
	2022	22	21	95%		
TX	2013	35	29	83%	23	66%
	2014	40	32	80%	27	68%
	2015	33	29	88%	20	61%
	2016	56	45	80%	44	79%
	2017	35	24	69%	20	57%
	2018	45	39	87%	30	67%
	2019	34	30	88%	22	65%
	2020	42	37	88%		
	2021	44	39	89%		
	2022	25	25	100%		

Retention to 2nd Year: Transfer Cohort by Geography



Graduation Rate: Transfer Cohort by Geography

6-Year Rates for 2013-17 Cohorts; 5-year rate for 2018; 4-year rate for 2019

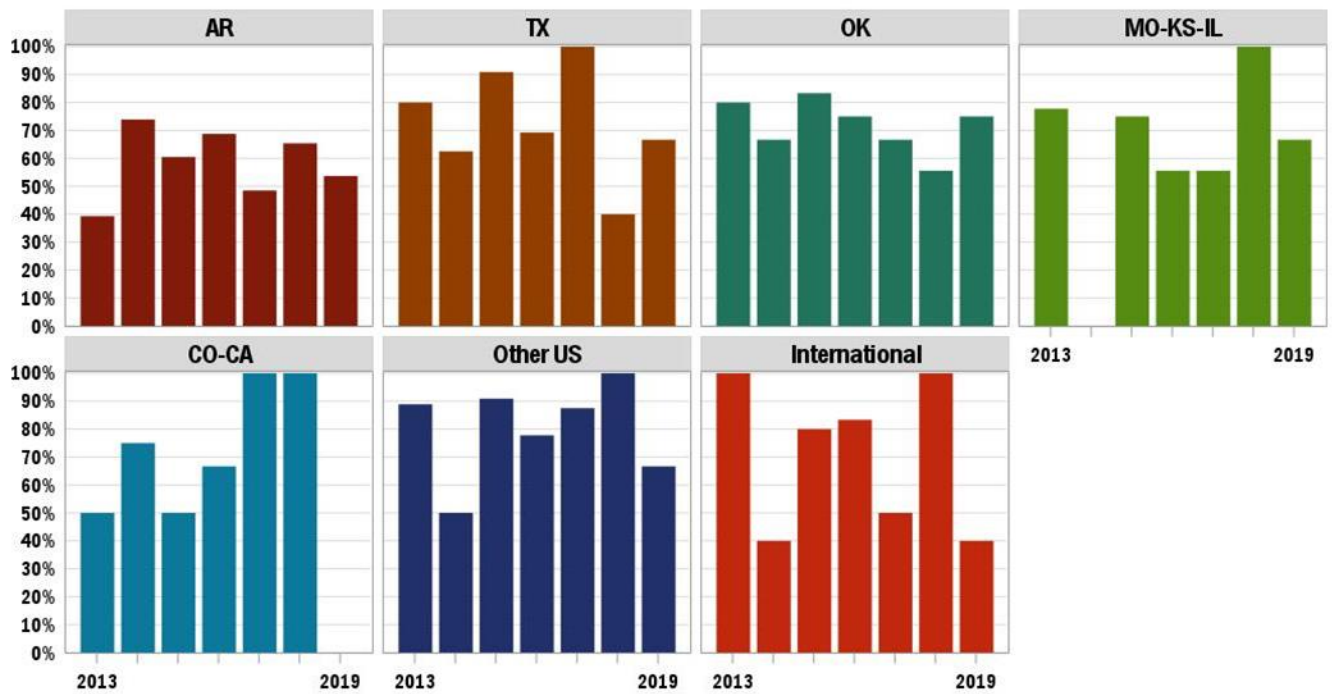


TABLE 12 TRANSFER RETENTION AND GRADUATION RATES BY GEOGRAPHY

New Transfers						
State	Entry Year	Initial Enrollment	Retained to 2nd Year		Graduated	
			#	%	#	%
AR	2013	28	16	57%	11	39%
	2014	23	21	91%	17	74%
	2015	43	31	72%	26	60%
	2016	32	27	84%	22	69%
	2017	33	21	64%	16	48%
	2018	26	17	65%	17	65%
	2019	41	29	71%	22	54%
	2020	29	21	72%		
	2021	20	10	50%		
	2022	26	21	81%		
CO-CA	2013	2	1	50%	1	50%
	2014	4	4	100%	3	75%
	2015	4	3	75%	2	50%
	2016	3	2	67%	2	67%
	2017	2	2	100%	2	100%
	2018	2	2	100%	2	100%
	2019	1	0	0%		
	2020	2	1	50%		
	2021	4	4	100%		
International	2013	3	3	100%	3	100%
	2014	5	3	60%	2	40%
	2015	5	4	80%	4	80%
	2016	6	5	83%	5	83%
	2017	6	4	67%	3	50%
	2018	4	4	100%	4	100%
	2019	5	3	60%	2	40%
	2020	2	1	50%		
	2021	2	2	100%		
	2022	2	2	100%		
MO-KS-IL	2013	9	8	89%	7	78%
	2014	1	0	0%		
	2015	4	4	100%	3	75%
	2016	9	7	78%	5	56%
	2017	9	6	67%	5	56%
	2018	8	8	100%	8	100%
	2019	6	5	83%	4	67%
	2020	6	5	83%		
	2021	2	1	50%		

New Transfers						
State	Entry Year	Initial Enrollment	Retained to 2nd Year		Graduated	
			#	%	#	%
	2022	6	4	67%		
OK	2013	5	4	80%	4	80%
	2014	6	5	83%	4	67%
	2015	6	5	83%	5	83%
	2016	4	4	100%	3	75%
	2017	9	6	67%	6	67%
	2018	9	8	89%	5	56%
	2019	4	3	75%	3	75%
	2020	1	1	100%		
	2021	4	3	75%		
	2022	6	2	33%		
Other US	2013	9	9	100%	8	89%
	2014	8	6	75%	4	50%
	2015	11	10	91%	10	91%
	2016	9	8	89%	7	78%
	2017	8	7	88%	7	88%
	2018	1	1	100%	1	100%
	2019	3	2	67%	2	67%
	2020	9	5	56%		
	2021	5	5	100%		
	2022	3	3	100%		
TX	2013	5	4	80%	4	80%
	2014	8	6	75%	5	63%
	2015	11	9	82%	10	91%
	2016	13	10	77%	9	69%
	2017	3	3	100%	3	100%
	2018	5	3	60%	2	40%
	2019	3	3	100%	2	67%
	2020	11	9	82%		
	2021	8	8	100%		
	2022	4	4	100%		

Retention and Graduation Rates by Scholarship Amounts

One area that is often cited as a major factor in retention is finances. The data confirm that students are generally more likely to retain and graduate if they have higher scholarship amounts

Retention to 2nd Year: Freshman Cohort by Scholarship Amount



Graduation Rate: Freshman Cohort by Scholarship Amount

6-Year Rates for 2013-17 Cohorts; 5-year rate for 2018; 4-year rate for 2019

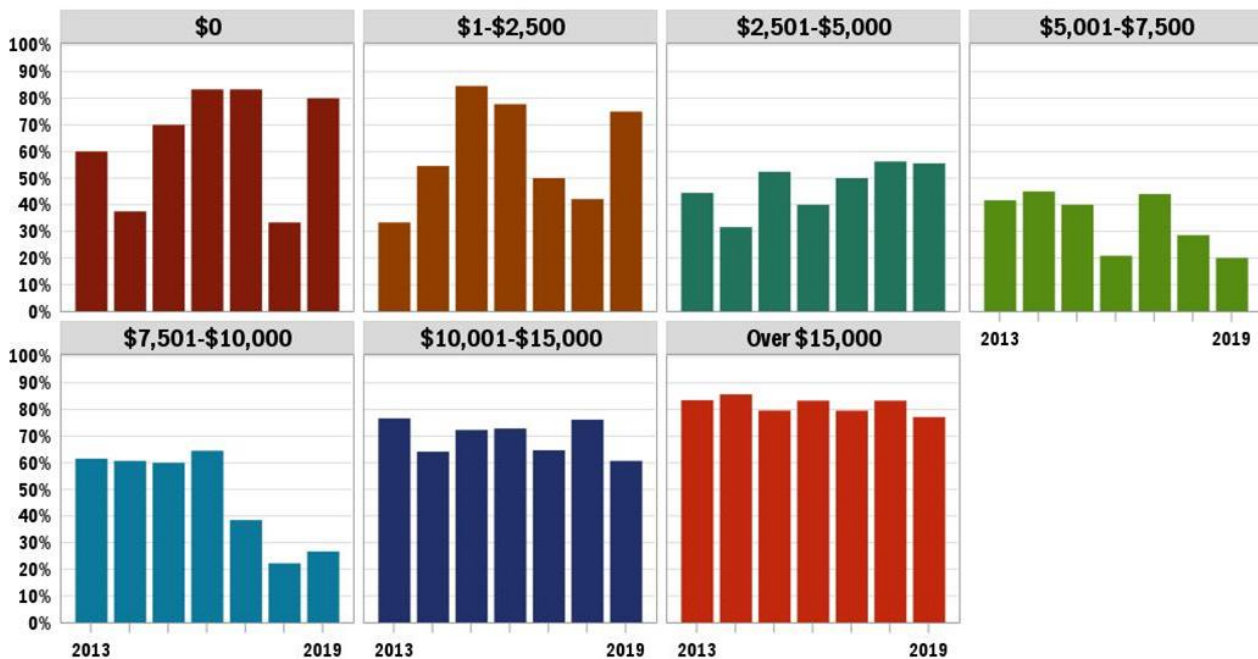
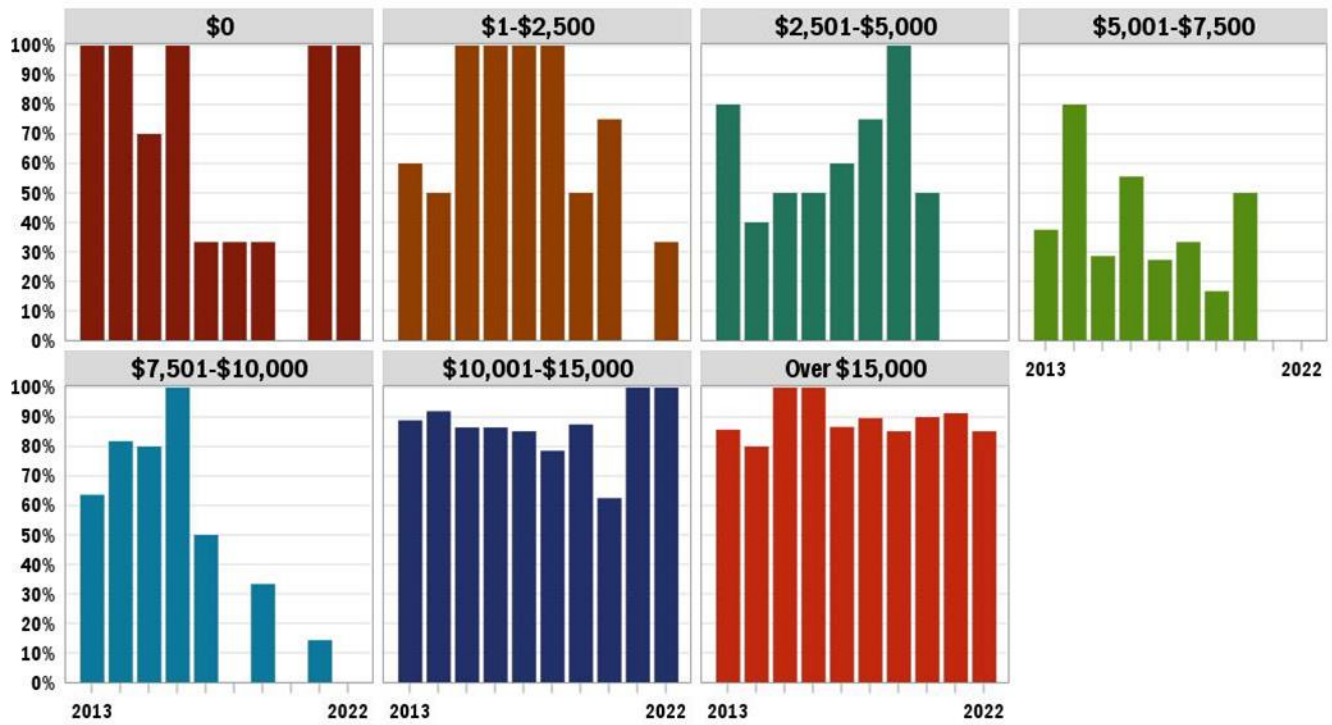


TABLE 13 FRESHMAN RETENTION AND GRADUATION RATES BY SCHOLARSHIP AMOUNT

New Freshmen						
Scholarship Amount	Entry Year	Initial Enrollment	Retained to 2nd Year		Graduated	
			#	%	#	%
\$0	2013	5	4	80%	3	60%
	2014	8	5	63%	3	38%
	2015	10	9	90%	7	70%
	2016	6	5	83%	5	83%
	2017	6	5	83%	5	83%
	2018	6	4	67%	2	33%
	2019	5	5	100%	4	80%
	2020	7	5	71%		
	2021	6	4	67%		
	2022	6	5	83%		
\$1-\$2,500	2013	6	2	33%	2	33%
	2014	11	9	82%	6	55%
	2015	13	12	92%	11	85%
	2016	9	7	78%	7	78%
	2017	16	12	75%	8	50%
	2018	19	10	53%	8	42%
	2019	12	10	83%	9	75%
	2020	11	7	64%	1	9%
	2021	6	4	67%		
	2022	3	3	100%		
\$2,501-\$5,000	2013	18	15	83%	8	44%
	2014	19	9	47%	6	32%
	2015	21	15	71%	11	52%
	2016	10	5	50%	4	40%
	2017	8	5	63%	4	50%
	2018	16	12	75%	9	56%
	2019	9	6	67%	5	56%
	2020	6	4	67%	1	17%
	2021	4	1	25%		
	2022	2	1	50%		
\$5,001-\$7,500	2013	24	12	50%	10	42%
	2014	20	14	70%	9	45%
	2015	20	12	60%	8	40%
	2016	24	8	33%	5	21%
	2017	25	11	44%	11	44%
	2018	14	5	36%	4	29%
	2019	10	2	20%	2	20%
	2020	7	1	14%		

New Freshmen						
Scholarship Amount	Entry Year	Initial Enrollment	Retained to 2nd Year		Graduated	
			#	%	#	%
	2021	8	4	50%		
	2022	10	4	40%		
\$7,501-\$10,000	2013	26	24	92%	16	62%
	2014	28	19	68%	17	61%
	2015	25	19	76%	15	60%
	2016	31	26	84%	20	65%
	2017	26	15	58%	10	38%
	2018	18	8	44%	4	22%
	2019	15	8	53%	4	27%
	2020	24	10	42%		
	2021	13	6	46%		
	2022	12	5	42%		
\$10,001-\$15,000	2013	133	116	87%	102	77%
	2014	120	95	79%	77	64%
	2015	112	96	86%	81	72%
	2016	129	108	84%	94	73%
	2017	102	86	84%	66	65%
	2018	84	76	90%	64	76%
	2019	84	69	82%	51	61%
	2020	65	49	75%	6	9%
	2021	83	62	75%		
	2022	59	53	90%		
Over \$15,000	2013	91	83	91%	76	84%
	2014	112	107	96%	96	86%
	2015	157	142	90%	125	80%
	2016	114	106	93%	95	83%
	2017	142	126	89%	113	80%
	2018	162	147	91%	135	83%
	2019	184	175	95%	142	77%
	2020	192	174	91%	14	7%
	2021	213	198	93%		
	2022	212	185	87%		

Retention to 2nd Year: Transfer Cohort by Scholarship Amount



Graduation Rate: Transfer Cohort by Scholarship Amount

6-Year Rates for 2013-17 Cohorts; 5-year rate for 2018; 4-year rate for 2019



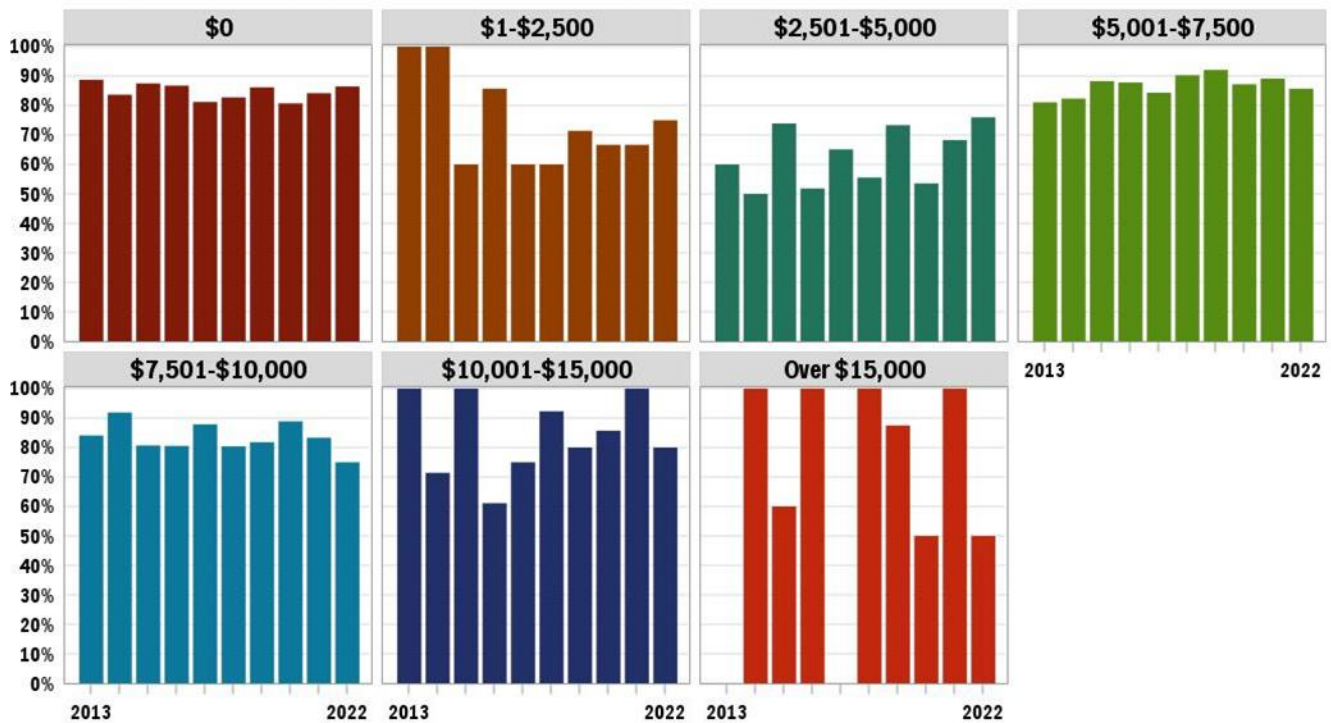
TABLE 14 TRANSFER RETENTION AND GRADUATION RATES BY SCHOLARSHIP AMOUNT

New Transfers							
Scholarship Amount	Entry Year	Initial Enrollment	Retained to 2nd Year		Graduated		
			#	%	#	%	
\$0	2012	7	2	29%	2	29%	
	2013	2	2	100%	2	100%	
	2014	2	2	100%	2	100%	
	2015	10	7	70%	7	70%	
	2017	3	3	100%	2	67%	
	2018	3	1	33%	1	33%	
	2019	3	1	33%	1	33%	
	2020	3	1	33%			
	2021	1	0	0%			
	2022	1	1	100%			
	\$1-\$2,500	2012	1	1	100%	1	100%
2013		5	3	60%	2	40%	
2014		2	1	50%			
2015		4	4	100%	4	100%	
2017		1	1	100%	1	100%	
2018		3	3	100%	3	100%	
2019		1	1	100%	1	100%	
2020		6	3	50%	3	50%	
2021		4	3	75%			
2022		1	0	0%			
\$2,501-\$5,000		2012	4	3	75%	3	75%
	2013	10	8	80%	8	80%	
	2014	5	2	40%	1	20%	
	2015	8	4	50%	3	38%	
	2017	8	4	50%	4	50%	
	2018	4	2	50%	2	50%	
	2019	4	3	75%	4	100%	
	2020	2	2	100%			
	2021	4	2	50%			
	\$5,001-\$7,500	2012	5	2	40%	3	60%
		2013	8	3	38%	3	38%
2014		5	4	80%	3	60%	
2015		7	2	29%	1	14%	
2017		9	5	56%	2	22%	
2018		11	3	27%			
2019		3	1	33%	1	33%	
2020		6	1	17%			
2021		2	1	50%			

New Transfers						
Scholarship Amount	Entry Year	Initial Enrollment	Retained to 2nd Year		Graduated	
			#	%	#	%
\$7,501-\$10,000	2022	3	0	0%		
	2012	18	14	78%	14	78%
	2013	11	7	64%	6	55%
	2014	11	9	82%	8	73%
	2015	5	4	80%	5	100%
	2017	3	3	100%	3	100%
	2018	7	4	57%	3	43%
	2019	1	0	0%		
	2020	3	1	33%		
	2021	3	0	0%		
	2022	7	1	14%		
\$10,001-\$15,000	2012	18	16	89%	13	72%
	2013	18	16	89%	10	56%
	2014	25	23	92%	17	68%
	2015	37	32	86%	27	73%
	2017	37	32	86%	26	70%
	2018	27	23	85%	21	78%
	2019	13	10	77%	8	62%
	2020	16	14	88%	8	50%
	2021	15	9	60%	1	7%
	2022	10	10	100%		
	Over \$15,000	2012	12	11	92%	11
2013		7	6	86%	7	100%
2014		5	4	80%	4	80%
2015		13	13	100%	13	100%
2017		15	15	100%	15	100%
2018		15	13	87%	11	73%
2019		30	27	90%	23	77%
2020		27	23	85%	14	52%
2021		31	28	90%	6	19%
2022		23	21	91%		
2021		31	28	90%		

Retention and Graduation Rates by Loan Amounts

Retention to 2nd Year: Freshman Cohort by Loan Amount



Graduation Rate: Freshman Cohort by Loan Amount

6-Year Rates for 2013-17 Cohorts; 5-year rate for 2018; 4-year rate for 2019

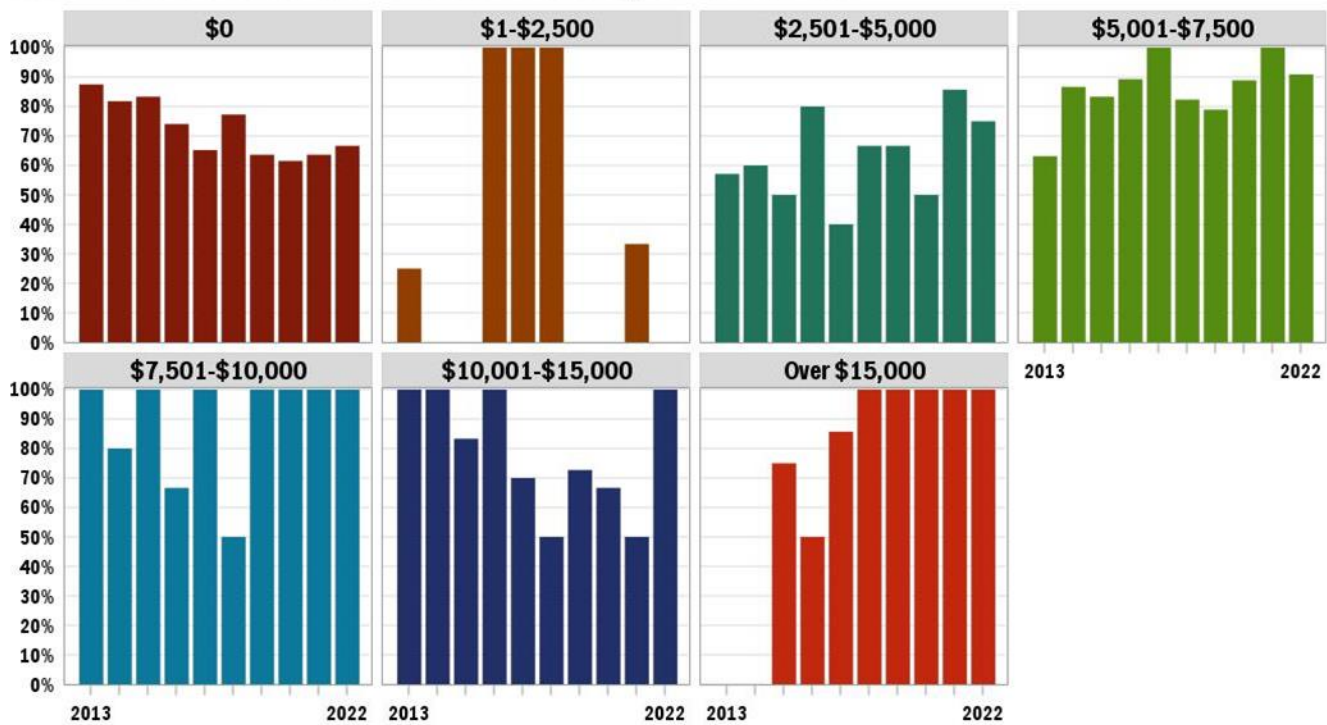


TABLE 15 FRESHMAN RETENTION AND GRADUATION RATES BY LOAN AMOUNT

New Freshmen							
			Retained to 2nd Year		Graduated		
Loan Amount	Entry Year	Initial Enrollment	#	%	#	%	
\$0	2012	145	122	84%	104	72%	
	2013	142	126	89%	108	76%	
	2014	147	123	84%	104	71%	
	2015	168	147	88%	128	76%	
	2017	151	131	87%	114	75%	
	2018	149	121	81%	96	64%	
	2019	145	120	83%	99	68%	
	2020	152	131	86%	12	8%	
	2021	166	134	81%	2	1%	
	2022	177	149	84%			
	\$1-\$2,500	2012	3	2	67%	2	67%
		2013	7	7	100%	6	86%
2014		4	4	100%	2	50%	
2015		5	3	60%	3	60%	
2017		7	6	86%	5	71%	
2018		5	3	60%	3	60%	
2019		5	3	60%	3	60%	
2020		7	5	71%			
2021		3	2	67%			
2022		3	2	67%			
\$2,501-\$5,000	2012	24	17	71%	14	58%	
	2013	25	15	60%	12	48%	
	2014	28	14	50%	12	43%	
	2015	23	17	74%	11	48%	
	2017	27	14	52%	12	44%	
	2018	43	28	65%	26	60%	
	2019	27	15	56%	13	48%	
	2020	30	22	73%	1	3%	
	2021	28	15	54%			
	2022	41	28	68%			
\$5,001-\$7,500	2012	73	57	78%	40	55%	
	2013	74	60	81%	50	68%	
	2014	85	70	82%	56	66%	
	2015	94	83	88%	68	72%	
	2017	82	72	88%	63	77%	
	2018	83	70	84%	58	70%	
	2019	72	65	90%	48	67%	
	2020	101	93	92%	8	8%	

New Freshmen						
			Retained to 2nd Year		Graduated	
Loan Amount	Entry Year	Initial Enrollment	#	%	#	%
	2021	86	75	87%		
	2022	92	82	89%		
\$7,501-\$10,000	2012	44	40	91%	34	77%
	2013	44	37	84%	33	75%
	2014	37	34	92%	29	78%
	2015	57	46	81%	39	68%
	2017	36	29	81%	27	75%
	2018	33	29	88%	26	79%
	2019	51	41	80%	34	67%
\$10,001-\$15,000	2020	11	9	82%	2	18%
	2021	18	16	89%		
	2022	12	10	83%		
	2012	26	21	81%	17	65%
	2013	11	11	100%	8	73%
	2014	14	10	71%	8	57%
	2015	6	6	100%	5	83%
	2017	18	11	61%	7	39%
	2018	12	9	75%	5	42%
	2019	13	12	92%	11	85%
Over \$15,000	2020	10	8	80%	2	20%
	2021	7	6	86%		
	2022	3	3	100%		
	2012	3	3	100%	3	100%
	2014	3	3	100%	3	100%
	2015	5	3	60%	3	60%
	2017	2	2	100%	2	100%
	2019	6	6	100%	5	83%
	2020	8	7	88%	1	13%
	2021	4	2	50%		
2022	5	5	100%			

Retention to 2nd Year: Transfer Cohort by Loan Amount



Graduation Rate: Transfer Cohort by Loan Amount

6-Year Rates for 2013-17 Cohorts; 5-year rate for 2018; 4-year rate for 2019

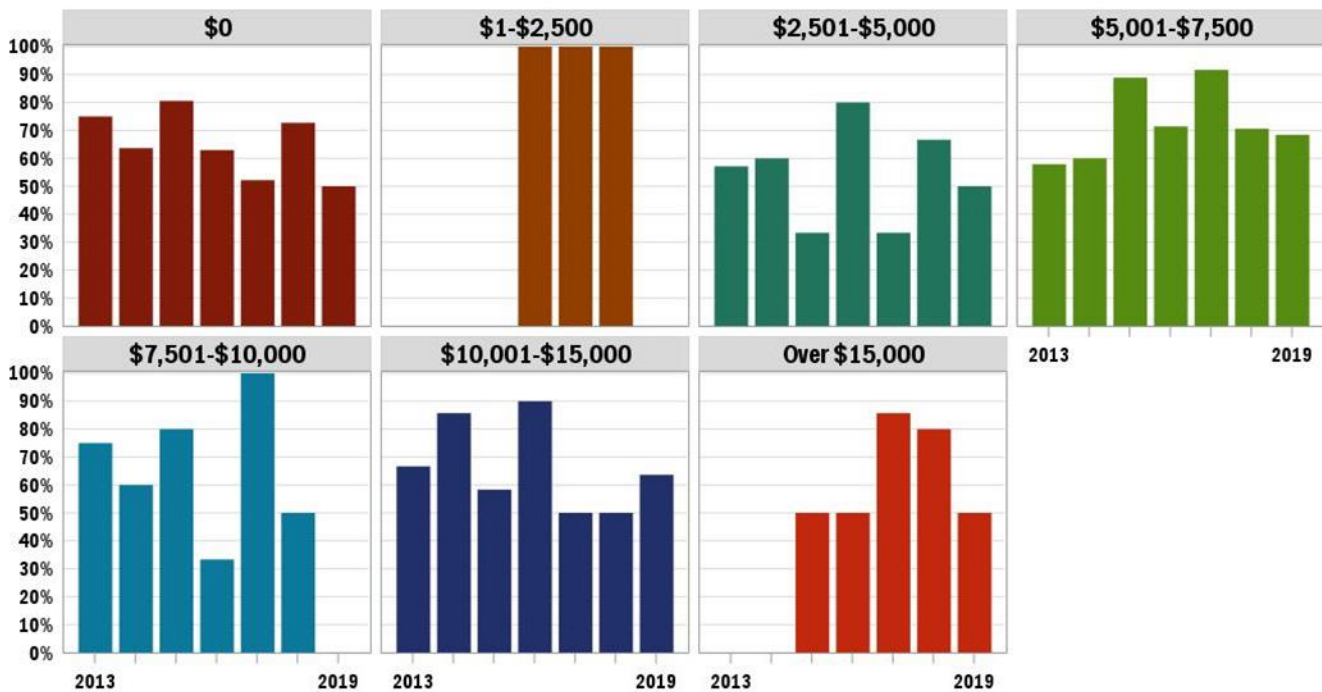


TABLE 16 TRANSFER RETENTION AND GRADUATION RATES BY LOAN AMOUNT

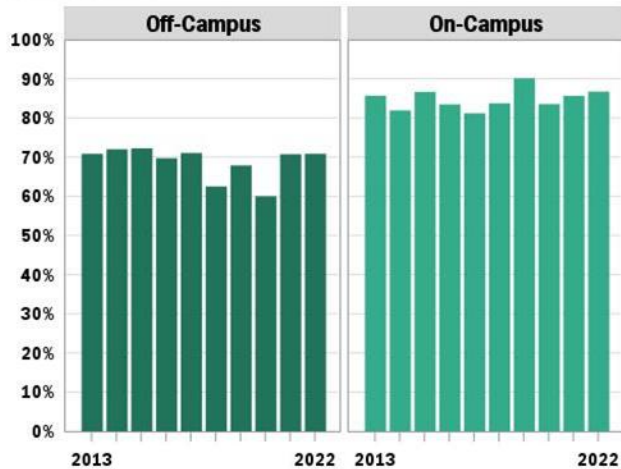
New Transfers						
Scholarship Amount	Entry Year	Initial Enrollment	Retained to 2nd Year		Graduated	
			#	%	#	%
\$0	2013	2	2	100%	2	100%
	2014	2	2	100%	2	100%
	2015	10	7	70%	7	70%
	2016	3	3	100%	2	67%
	2017	3	1	33%	1	33%
	2018	3	1	33%	1	33%
	2019	3	1	33%	1	33%
	2020	1	0	0%		
	2021	1	1	100%		
	2022	1	1	100%		
\$1-\$2,500	2013	5	3	60%	2	40%
	2014	2	1	50%		
	2015	4	4	100%	4	100%
	2016	1	1	100%	1	100%
	2017	3	3	100%	3	100%
	2018	1	1	100%	1	100%
	2019	6	3	50%	3	50%
	2020	4	3	75%	3	75%
	2021	1	0	0%		
	2022	3	1	33%		
\$2,501-\$5,000	2013	10	8	80%	8	80%
	2014	5	2	40%	1	20%
	2015	8	4	50%	3	38%
	2016	8	4	50%	4	50%
	2017	5	3	60%	3	60%
	2018	4	3	75%	4	100%
	2019	2	2	100%	1	50%
	2020	4	2	50%	1	25%
	2021					
	2022					
\$5,001-\$7,500	2013	8	3	38%	3	38%
	2014	5	4	80%	3	60%
	2015	7	2	29%	1	14%
	2016	9	5	56%	2	22%
	2017	11	3	27%		
	2018	3	1	33%	1	33%

New Transfers						
Scholarship Amount	Entry Year	Initial Enrollment	Retained to 2nd Year		Graduated	
			#	%	#	%
	2019	6	1	17%		
	2020	2	1	50%	1	50%
	2021	3	0	0%		
	2022	2	0	0%		
\$7,501-\$10,000	2013	11	7	64%	6	55%
	2014	11	9	82%	8	73%
	2015	5	4	80%	5	100%
	2016	3	3	100%	3	100%
	2017	6	3	50%	2	33%
	2018	1	0	0%		
	2019	3	1	33%		
	2020	3	0	0%		
	2021	7	1	14%	1	14%
	2022	3	0	0%		
\$10,001-\$15,000	2013	18	16	89%	10	56%
	2014	25	23	92%	17	68%
	2015	37	32	86%	27	73%
	2016	37	32	86%	26	70%
	2017	27	23	85%	21	78%
	2018	14	11	79%	8	57%
	2019	16	14	88%	9	56%
	2020	16	10	63%	6	38%
	2021	10	10	100%	4	40%
	2022	11	11	100%		
Over \$15,000	2013	7	6	86%	7	100%
	2014	5	4	80%	4	80%
	2015	13	13	100%	13	100%
	2016	15	15	100%	15	100%
	2017	15	13	87%	12	80%
	2018	29	26	90%	24	83%
	2019	27	23	85%	21	78%
	2020	30	27	90%	16	53%
	2021	23	21	91%	3	13%
	2022	27	23	85%		

Retention Rates by First-Year On-/Off-Campus Residence

The cohort size for off-campus freshmen is small—averaging less than 10% of the total cohort. It is clear, however that our freshmen commuters are missing out on something that helps connect them to the institution.

Retention to 2nd Year: Freshman Cohort by Residence



Retention to 2nd Year: Transfer Cohort by Residence

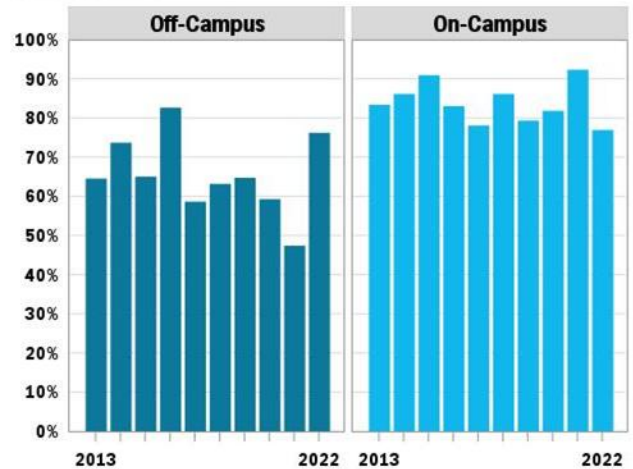


TABLE 17: PERSISTENCE AND COMPLETION BY ON-/OFF-CAMPUS FOR FRESHMEN

New Freshmen						
			Retained to 2nd Year		Graduated	
On-Off-Campus	Entry Year	Initial Enrollment	#	%	#	%
Off-Campus	2013	24	17	71%	13	54%
	2014	25	18	72%	13	52%
	2015	36	26	72%	24	67%
	2016	33	23	70%	15	45%
	2017	38	27	71%	20	53%
	2018	24	15	63%	13	54%
	2019	56	38	68%	25	45%
	2020	45	27	60%		
	2021	41	29	71%		
	2022	48	34	71%		
On-Campus	2013	279	239	86%	204	73%
	2014	293	240	82%	201	69%
	2015	322	279	87%	234	73%
	2016	290	242	83%	215	74%
	2017	287	233	81%	197	69%
	2018	295	247	84%	213	72%
	2019	263	237	90%	192	73%
	2020	267	223	84%		
	2021	292	250	86%		
	2022	256	222	87%		

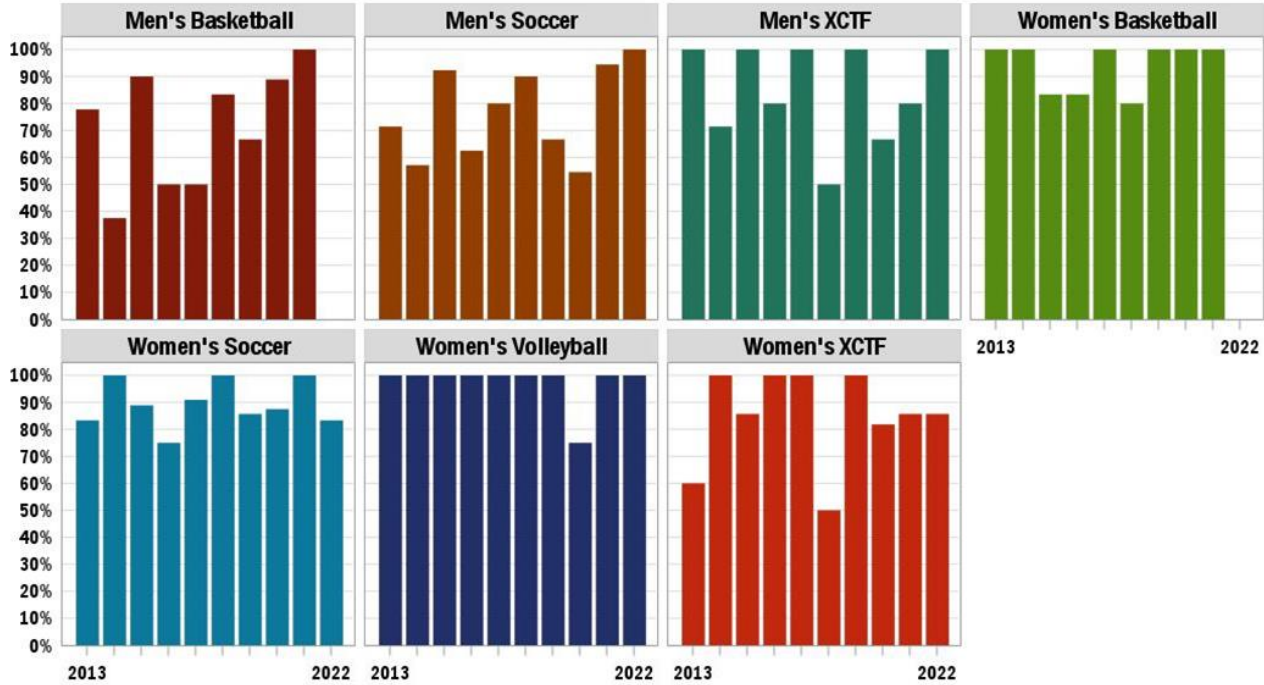
TABLE 18: PERSISTENCE AND COMPLETION BY ON-/OFF-CAMPUS FOR TRANSFER STUDENTS

New Transfers						
			Retained to 2nd Year		Graduated	
On-Off-Campus	Entry Year	Initial Enrollment	#	%	#	%
Off-Campus	2013	31	20	65%	14	45%
	2014	19	14	74%	9	47%
	2015	40	26	65%	21	53%
	2016	23	19	83%	15	65%
	2017	29	17	59%	15	52%
	2018	19	12	63%	12	63%
	2019	34	22	65%	16	47%
	2020	27	16	59%		
	2021	19	9	47%		
	2022	21	16	76%		
On-Campus	2013	30	25	83%	24	80%
	2014	36	31	86%	26	72%
	2015	44	40	91%	39	89%
	2016	53	44	83%	38	72%
	2017	41	32	78%	27	66%
	2018	36	31	86%	27	75%
	2019	29	23	79%	19	66%
	2020	33	27	82%		
	2021	26	24	92%		
	2022	26	20	77%		

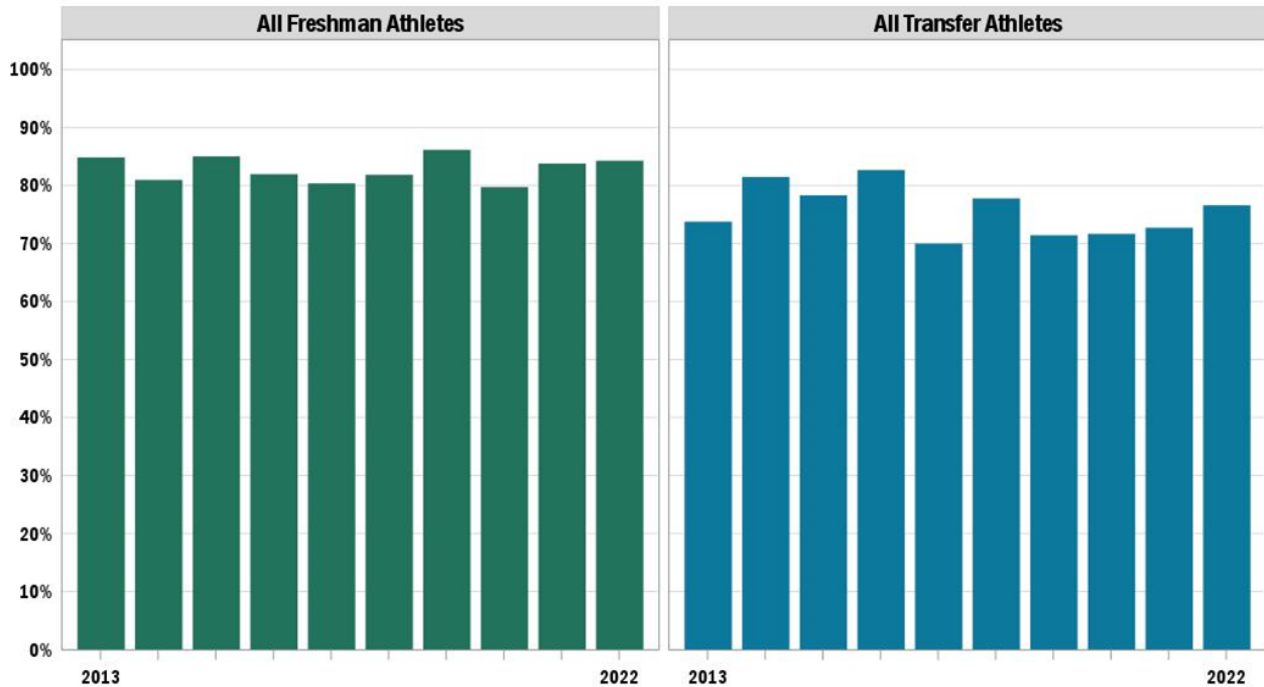
Retention and Graduation Rates by Athletes

On the whole, our athletes persist at rates similar to those of the student body. There is great year-to-year variation within individual sports. The cohort sizes of most sports and for transfers by sport are too small to be treated separately.

Retention to 2nd Year: Athletes by Sport

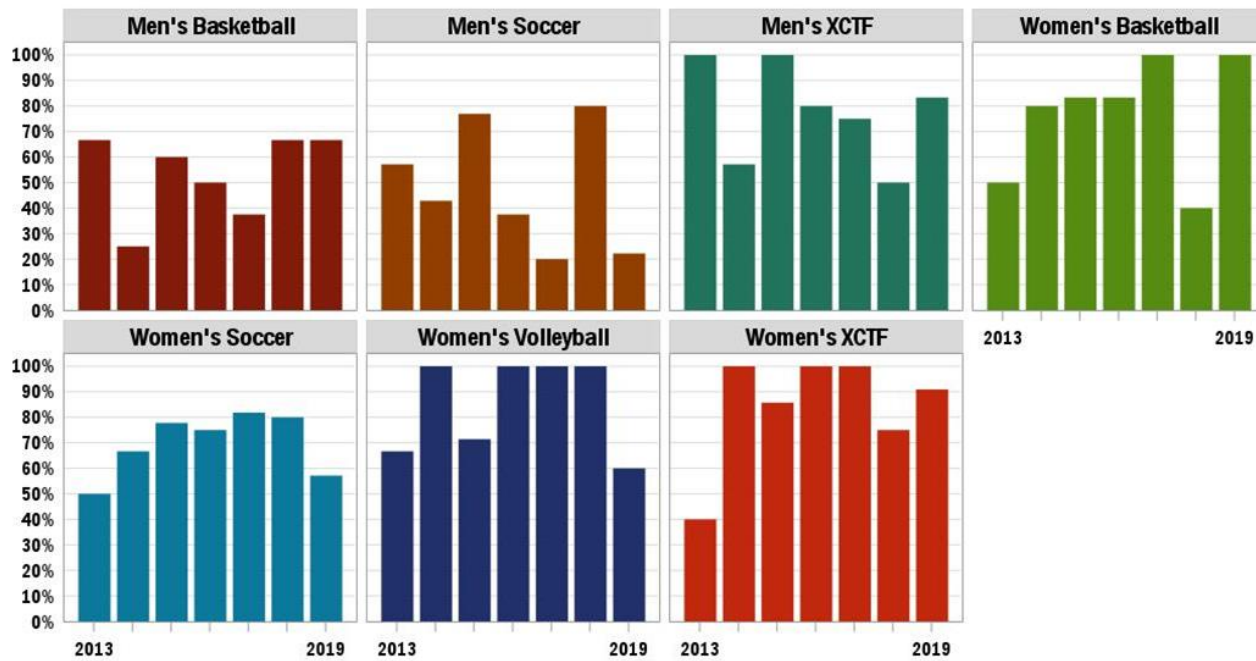


Retention to 2nd Year: Athletes by Freshman or Transfer



Graduation Rate: Athletes by Sport

6-Year Rates for 2013-17 Cohorts; 5-year rate for 2018; 4-year rate for 2019



Graduation Rate: Athletes by Freshman or Transfer

6-Year Rates for 2013-17 Cohorts; 5-year rate for 2018; 4-year rate for 2019

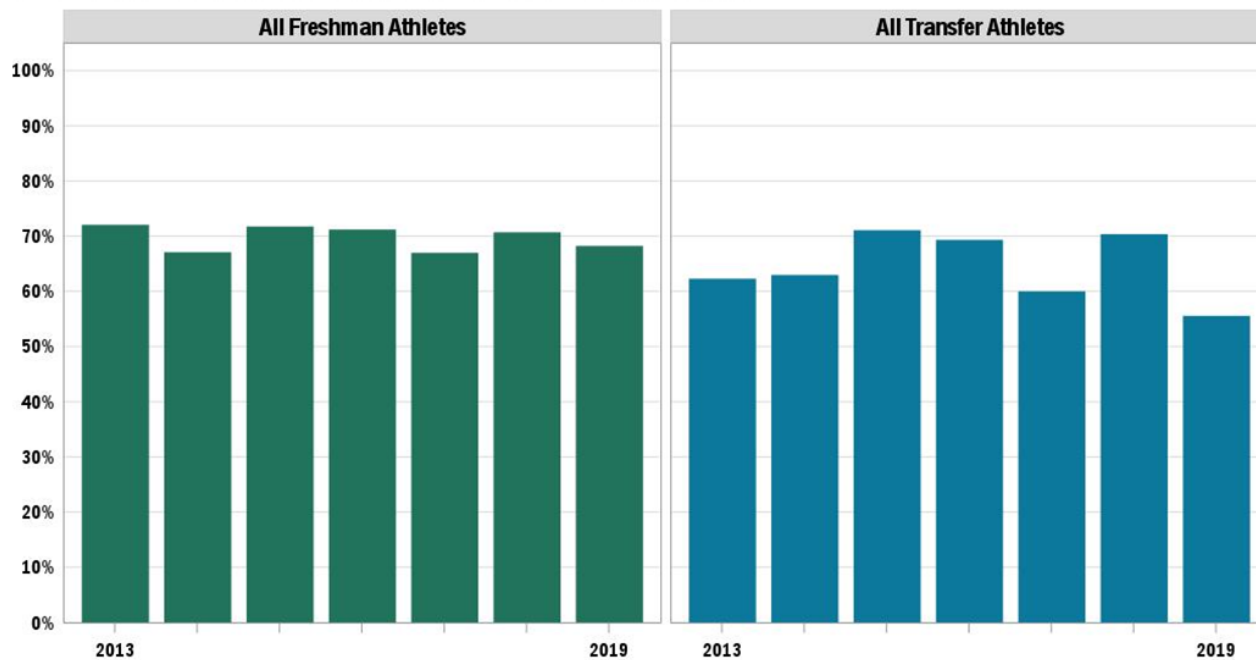


TABLE 19 ATHLETE RETENTION AND GRADUATION RATES

Athletes						
Sport	Entry Year	Initial Enrollment	Retained to 2nd Year		Graduated	
			#	%	#	%
All Freshman Athletes	2013	297	252	85%	214	72%
	2014	310	251	81%	208	67%
	2015	354	301	85%	254	72%
	2016	316	259	82%	225	71%
	2017	321	258	80%	215	67%
	2018	314	257	82%	222	71%
	2019	318	274	86%	217	68%
	2020	291	232	80%		
	2021	327	274	84%		
	2022	299	252	84%		
All Transfer Athletes	2013	61	45	74%	38	62%
	2014	54	44	81%	34	63%
	2015	83	65	78%	59	71%
	2016	75	62	83%	52	69%
	2017	70	49	70%	42	60%
	2018	54	42	78%	38	70%
	2019	63	45	71%	35	56%
	2020	60	43	72%		
	2021	44	32	73%		
	2022	47	36	77%		
Men's Basketball	2013	9	7	78%	6	67%
	2014	8	3	38%	2	25%
	2015	10	9	90%	6	60%
	2016	2	1	50%	1	50%
	2017	8	4	50%	3	38%
	2018	6	5	83%	4	67%
	2019	6	4	67%	4	67%
	2020	9	8	89%		
	2021	3	3	100%		
	2022					
Men's Soccer	2013	7	5	71%	4	57%
	2014	7	4	57%	3	43%
	2015	13	12	92%	10	77%
	2016	8	5	63%	3	38%
	2017	5	4	80%	1	20%
	2018	10	9	90%	8	80%
	2019	9	6	67%	2	22%
	2020	11	6	55%		
2021	18	17	94%			

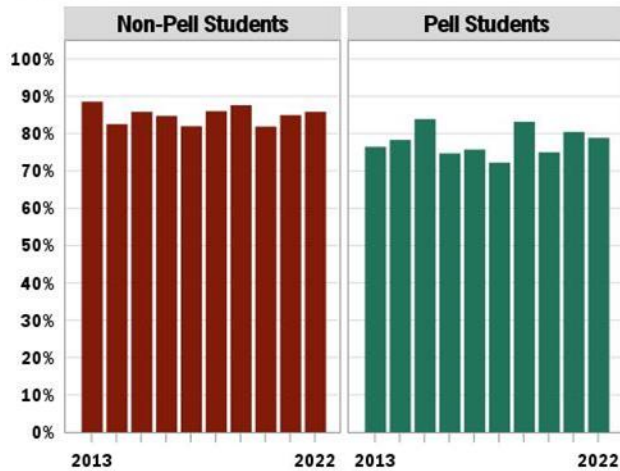
Athletes						
Sport	Entry Year	Initial Enrollment	Retained to 2nd Year		Graduated	
			#	%	#	%
	2022	8	8	100%		
Men's XCTF	2013	3	3	100%	3	100%
	2014	7	5	71%	4	57%
	2015	4	4	100%	4	100%
	2016	5	4	80%	4	80%
	2017	4	4	100%	3	75%
	2018	2	1	50%	1	50%
	2019	6	6	100%	5	83%
	2020	6	4	67%		
	2021	10	8	80%		
	2022	2	2	100%		
Women's Basketball	2013	4	4	100%	2	50%
	2014	5	5	100%	4	80%
	2015	6	5	83%	5	83%
	2016	6	5	83%	5	83%
	2017	2	2	100%	2	100%
	2018	5	4	80%	2	40%
	2019	4	4	100%	4	100%
	2020	8	8	100%		
	2021	1	1	100%		
	2022					
Women's Soccer	2013	6	5	83%	3	50%
	2014	3	3	100%	2	67%
	2015	9	8	89%	7	78%
	2016	4	3	75%	3	75%
	2017	11	10	91%	9	82%
	2018	5	5	100%	4	80%
	2019	7	6	86%	4	57%
	2020	8	7	88%		
	2021	5	5	100%		
	2022	6	5	83%		
Women's Volleyball	2013	3	3	100%	2	67%
	2014	3	3	100%	3	100%
	2015	7	7	100%	5	71%
	2016	5	5	100%	5	100%
	2017	2	2	100%	2	100%
	2018	3	3	100%	3	100%
	2019	5	5	100%	3	60%
	2020	4	3	75%		
2021	4	4	100%			

Athletes						
			Retained to 2nd Year		Graduated	
Sport	Entry Year	Initial Enrollment	#	%	#	%
	2022	3	3	100%		
Women's XCTF	2013	5	3	60%	2	40%
	2014	4	4	100%	4	100%
	2015	7	6	86%	6	86%
	2016	3	3	100%	3	100%
	2017	3	3	100%	3	100%
	2018	4	2	50%	3	75%
	2019	11	11	100%	10	91%
	2020	11	9	82%		
	2021	7	6	86%		
	2022	14	12	86%		

Retention and Graduation Rates by Pell Status: Freshman Only

Generally, Pell recipients have retained and graduated at a slightly lower rate than the non-Pell students with a greater difference in the graduation rate than in the retention rate.

Retention to 2nd Year: Freshman by Pell Status



Graduation Rate: Freshman by Pell Status 6-Year Rates for 2013-17 Cohorts; 5-year rate for 2018; 4-year rate for 2019

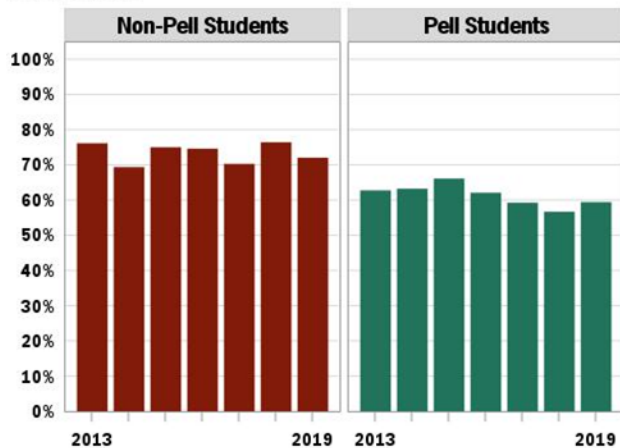
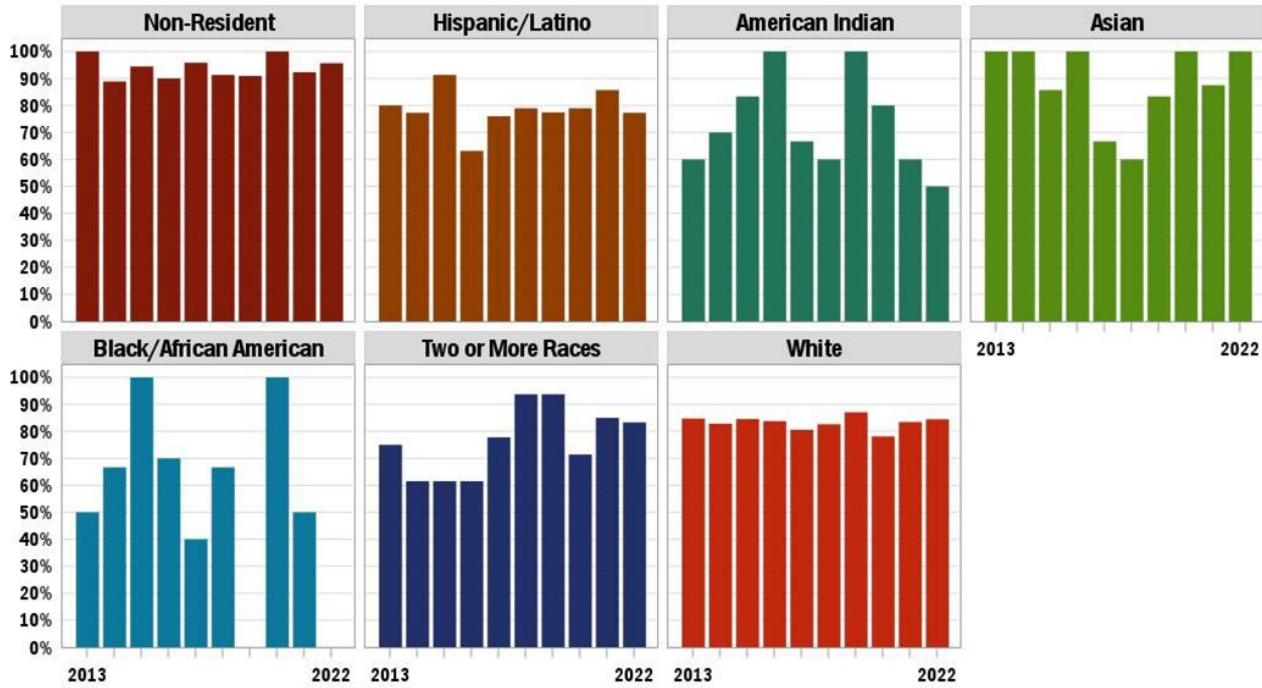


TABLE 20 FRESHMAN RETENTION AND GRADUATION RATES BY PELL STATUS

New Freshmen						
			Retained to 2nd Year		Graduated	
Pell Status	Entry Year	Initial Enrollment	#	%	#	%
Non-Pell Students	2013	201	178	89%	153	76%
	2014	212	175	83%	147	69%
	2015	240	206	86%	180	75%
	2016	236	200	85%	176	75%
	2017	222	182	82%	156	70%
	2018	229	197	86%	175	76%
	2019	218	191	88%	157	72%
	2020	232	190	82%		
	2021	246	209	85%		
	2022	233	200	86%		
Pell Students	2013	102	78	76%	64	63%
	2014	106	83	78%	67	63%
	2015	118	99	84%	78	66%
	2016	87	65	75%	54	62%
	2017	103	78	76%	61	59%
	2018	90	65	72%	51	57%
	2019	101	84	83%	60	59%
	2020	80	60	75%		
	2021	87	70	80%		
	2022	71	56	79%		

Retention and Graduation Rates by Race/Ethnicity: Freshman Only

Retention to 2nd Year: Freshman by Race/Ethnicity



Graduation Rate: Freshman by Race/Ethnicity

6-Year Rates for 2013-17 Cohorts; 5-year rate for 2018; 4-year rate for 2019

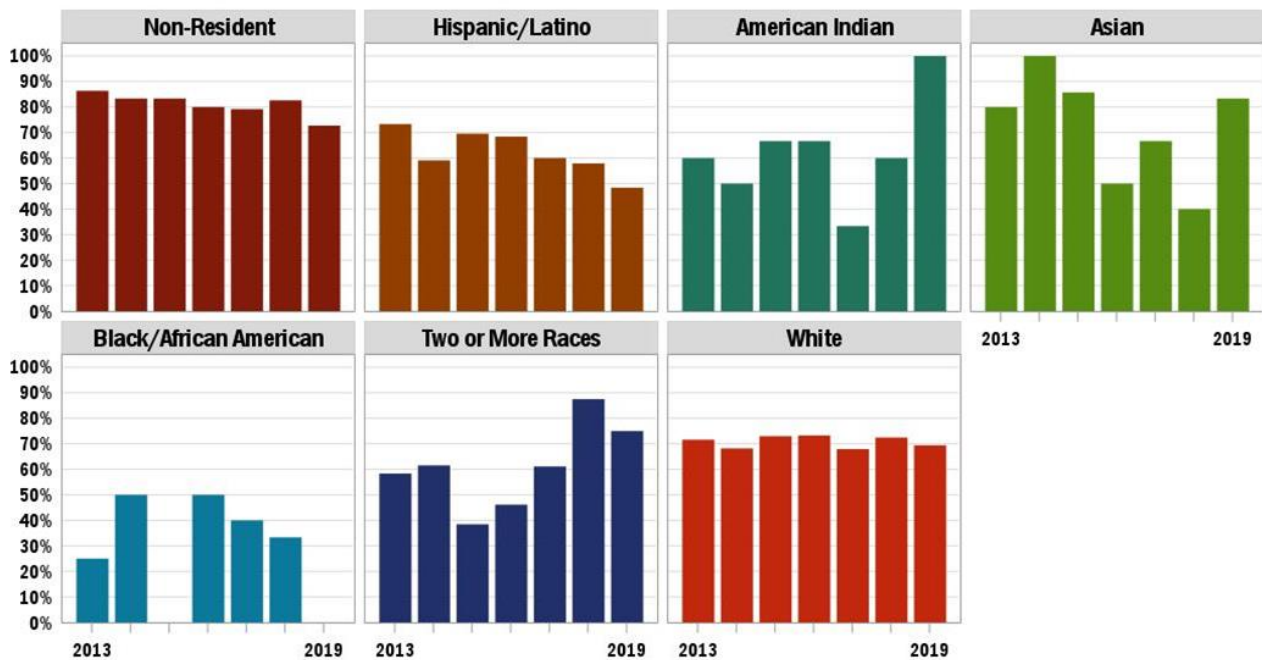


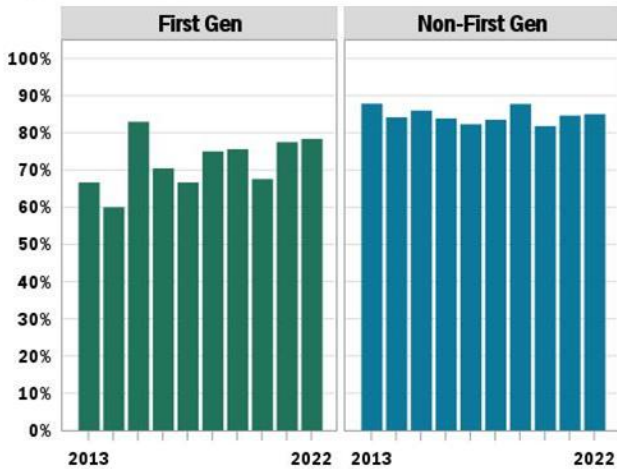
TABLE 21 FRESHMAN RETENTION AND GRADUATION RATES BY RACE/ETHNICITY

New Freshmen						
Race Ethnicity	Entry Year	Initial Enrollment	Retained to 2nd Year		Graduated	
			#	%	#	%
Non-Resident	2013	22	22	100%	19	86%
	2014	18	16	89%	15	83%
	2015	18	17	94%	15	83%
	2016	20	18	90%	16	80%
	2017	24	23	96%	19	79%
	2018	23	21	91%	19	83%
	2019	22	20	91%	16	73%
	2020	18	18	100%		
	2021	26	24	92%		
	2022	23	22	96%		
Hispanic/Latino	2013	15	12	80%	11	73%
	2014	22	17	77%	13	59%
	2015	23	21	91%	16	70%
	2016	19	12	63%	13	68%
	2017	25	19	76%	15	60%
	2018	19	15	79%	11	58%
	2019	31	24	77%	15	48%
	2020	19	15	79%		
	2021	21	18	86%		
	2022	44	34	77%		
American Indian	2013	5	3	60%	3	60%
	2014	10	7	70%	5	50%
	2015	12	10	83%	8	67%
	2016	3	3	100%	2	67%
	2017	6	4	67%	2	33%
	2018	5	3	60%	3	60%
	2019	3	3	100%	3	100%
	2020	5	4	80%		
	2021	5	3	60%		
	2022	4	2	50%		
Asian	2013	5	5	100%	4	80%
	2014	2	2	100%	2	100%
	2015	7	6	86%	6	86%
	2016	4	4	100%	2	50%
	2017	3	2	67%	2	67%
	2018	5	3	60%	2	40%
2019	6	5	83%	5	83%	
2020	5	5	100%			

New Freshmen						
Race Ethnicity	Entry Year	Initial Enrollment	Retained to 2nd Year		Graduated	
			#	%	#	%
	2021	8	7	88%		
	2022	4	4	100%		
Black/African American	2013	4	2	50%	1	25%
	2014	6	4	67%	3	50%
	2015	4	4	100%		
	2016	10	7	70%	5	50%
	2017	5	2	40%	2	40%
	2018	6	4	67%	2	33%
	2019	3	0	0%		
	2020	6	6	100%		
	2021	4	2	50%		
	2022					
Two or More Races	2013	12	9	75%	7	58%
	2014	13	8	62%	8	62%
	2015	13	8	62%	5	38%
	2016	13	8	62%	6	46%
	2017	18	14	78%	11	61%
	2018	16	15	94%	14	88%
	2019	16	15	94%	12	75%
	2020	14	10	71%		
	2021	20	17	85%		
	2022	18	15	83%		
White	2013	236	200	85%	169	72%
	2014	239	198	83%	163	68%
	2015	259	219	85%	189	73%
	2016	247	207	84%	181	73%
	2017	237	191	81%	161	68%
	2018	236	195	83%	171	72%
	2019	232	202	87%	161	69%
	2020	224	175	78%		
	2021	248	207	83%		
	2022	206	174	84%		

Retention and Graduation Rates by First-Gen Status: Freshman Only

Retention to 2nd Year: Freshman by First Gen Status



Graduation Rate: Freshman by First-Gen Status

6-Year Rates for 2013-17 Cohorts; 5-year rate for 2018; 4-year rate for 2019

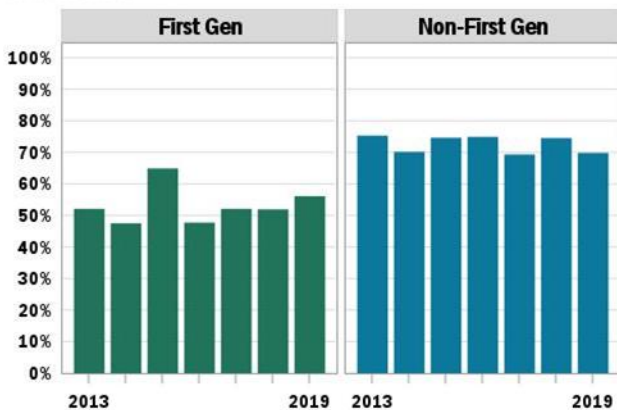


TABLE 22 FRESHMAN RETENTION AND GRADUATION RATES BY FIRST-GENERATION STATUS

New Freshmen						
			Retained to 2nd Year		Graduated	
First Gen	Entry Year	Initial Enrollment	#	%	#	%
First Gen	2013	48	32	67%	25	52%
	2014	40	24	60%	19	48%
	2015	94	78	83%	61	65%
	2016	44	31	70%	21	48%
	2017	48	32	67%	25	52%
	2018	52	39	75%	27	52%
	2019	41	31	76%	23	56%
	2020	37	25	68%		
	2021	40	31	78%		
	2022	37	29	78%		
Non-First Gen	2013	255	224	88%	192	75%
	2014	278	234	84%	195	70%
	2015	264	227	86%	197	75%
	2016	279	234	84%	209	75%
	2017	277	228	82%	192	69%
	2018	267	223	84%	199	75%
	2019	278	244	88%	194	70%
	2020	275	225	82%		
	2021	293	248	85%		
	2022	267	227	85%		

Contact Information

Lynette Duncan
 Director of Institutional Research & Assessment
lduncan@jbu.edu
 479.524.7225